

Woodside Energy Ltd.



Directional Drilling End of Well Report

Well: Thylacine South-1

Date: March – April 2006

Sperry Drilling Services

Table of Contents

1. Well Summary
 2. Definitive Survey Report and A4 Plot
 3. Survey and Drilling Parameters
 4. BHA Data
 5. Motor Performance Reports
 6. Daily Directional Drilling Reports
-

Customer : Woodside Energy Ltd

Well : Thylacine South 1

Job Objectives:

Thylacine South - 1 has two objectives:

The primary objective is to prove the presence of gas and recover a hydrocarbon sample to surface from an unproven hydrocarbon pool in Unit 1 and Unit 2 (Thylacine Sandstone Member) reservoir sandstones. This is in a structural nose south of the main Thylacine field.

The secondary objective is to test for the presence of a possible separate and deeper hydrocarbon pool within the Flaxman and Waarre Formation sandstones beneath the primary objective. In the event that hydrocarbons are present at the deeper level a hydrocarbon sample will be recovered to surface from the deeper pool.

Summary of Results:

30" Hole Section 150m - 218m

The well was spudded at 150m and the section drilled to 218m with no problems.

23" Hole Section 218m - 638m

The short section was drilled in one run with no problems. Once out of the shoe the well was nudged to 3° inclination on 180° azimuth, held until just prior to TD, then built to 5° to provide a reference for Geopilot in the 12¼" section. At 638m the assembly was tripped to run 18 5/8" casing.

12¼" Section

BHA # 3 638m - 3134m

The BHA was RIH to 600m MDRT and the GP bearings were run in. Drilling of the cement shoe then commenced with 600gpm and 30-60rpm. The 3 degree build rate was achieved with 50% to 75% deflection. Moderate ROP of 75 - 115 m/hr was achieved through the Marl and Claystone. Upon intersecting the top of Massacre at approximately 1516mTVD the ROP diminished to 1 - 2m/hr. Due to intermittent intervals of interbedded stringers consisting of 60% Siderite and Pyrite formations. In the tangent the drop rate was very slight, however during the final stages of the hole the drop rate increased from 0.5 - 1°/30m and the hole turned to the left. This was after the ABI failed and we were in home position. At 2607m we stopped getting response from the ABI. We attempted to set the tool manually but the tool was unable to get a highside from the ABI. From 2607m to TD at 3137m the inclination dropped 15 degrees and the hole walked 16 degrees to the left. The ROP dropped off at 3130m to 2m/hr.

BHA # 4 3134 - 3245m.

Broke in bit and started to drill with 80% DEF and 80R toolface. The assembly continued to drop and the toolface was brought around to 25R before it stopped. The hole was drilled to 3245m until encountering a 700psi loss. Surface equipment passed inspection then assembly was pulled back wet to investigate.

Discussion:

BHA Summary:

BHA # 1 150m - 218m

17½" Milled Tooth Bit
30" Hole Opener
Float Sub w/solid float
2 x 9¾" Spiral Drill Collars
29¾" Stabiliser
1 x 9¾" Spiral Drill Collar
X/Over
3 x 8¼" Spiral Drill Collars
X/Over
3 x 5½" HWDP

BHA # 2 218m - 638m

23" Milled Tooth Bit
 9 5/8" SperryDrill 6/7 Lobe 5.0 Stg.
 Float Sub
 9½" Hangoff Collar w/TM & Dir
 9½" NMDC
 23" String Stab
 9¾" Spiral DC
 X/O
 3 x 9¾" Spiral DC
 Jar
 2 x 8¼" Spiral DC
 X/O
 6 x 5½" HWDP

BHA # 3 638m - 3134m

12¼" PDC Bit: Security FM3563Z
 9600 Series Geopilot w/GABI
 8" NM Flex Collar w/DM
 8" RLL w/DGR + EWR
 8" ALD + CTN + ACAL
 8" PWD + HCIM
 8" HOC w/P4M Pulser
 8" Bat Sonic
 8" Float Sub
 3 x 8¼" Spiral DC
 Jar
 2 x 8¼" Spiral Dc
 x/o
 6 x 5½" HWDP

BHA # 4 3134 - 3245m.

12¼" PDC Bit: Reed Hycalog RSX516S-A10
 9600 Series Geopilot w/GABI
 8" NM Flex Collar w/DM
 8" RLL w/DGR + EWR
 8" ALD + CTN + ACAL
 8" PWD + HCIM
 8" HOC w/P4M Pulser
 8" Bat Sonic
 8" Float Sub
 3 x 8¼" Spiral DC
 Jar
 2 x 8¼" Spiral Dc
 x/o
 6 x 5½" HWD

BHA #	Bit #	Motor Run #	Hole Size (in)	MD In (m)	MD Out (m)	TVD In (m)	TVD Out (m)	Inc In (deg)	Inc Out (deg)	Azi In (deg)	Azi Out (deg)	Drig hrs	Circ hrs
1	1		17.500	150	218	150	218	0.0	0.4	0	44	6	1
2	2	1	23.000	218	638	218	637	0.4	4.6	44	176	21	3
3	3		12.250	638	3134	637	2474	4.6	29.4	176	131	136	17
4	4		12.250	3134	3245	2474	2571	29.4	29.7	131	159	9	4

Table 1 - BHA Summary

Motor Run Summary:

Motor Run # 1 218m to 638m

Size : 9 5/8"
 Type : SperryDrill PVX
 Serial No : 963-340

Lobe Config : 6/7 Lobe 5.0 Stg.
 Bend : 1.15°
 Sleeve : 22¾"

The motor performed to specification with no problems encountered. 33% of the section was drilled in sliding mode.

Motor Run #	Manufacturer	Type	Lobe	OD (in)	Gauge (in)	Bend (deg)	Adj	DLS (Ori) (°/30m)	ROP (Ori) (m/hr)	ROP (Rot) (m/hr)
1	SSDS	SperryDrill	6/7	9.625	22.750	1.15	Y		19	21

Table 2 - Motor Run Summary

Bit Run Summary:

Bit # 1

Make : Hughes
 Size : 17½"
 Type : MX-1 Milled Tooth
 Serial No : T-1852-0
 IADC : 1-1-5
 Jets : 3 x 12
 Tfa : 0.331
 Grading : 1-1-WT-A-E-I-NO-TD

BIT # 2

Make : Varel
 Size : 23"
 Type : ETR1G
 Serial No : 218184
 IADC : 1-1-5
 Jets : 2 x 22, 1 x 20, 1 x 18
 Tfa : 1.187
 Grading : 1-1-BU-A-E-I-WT-TD

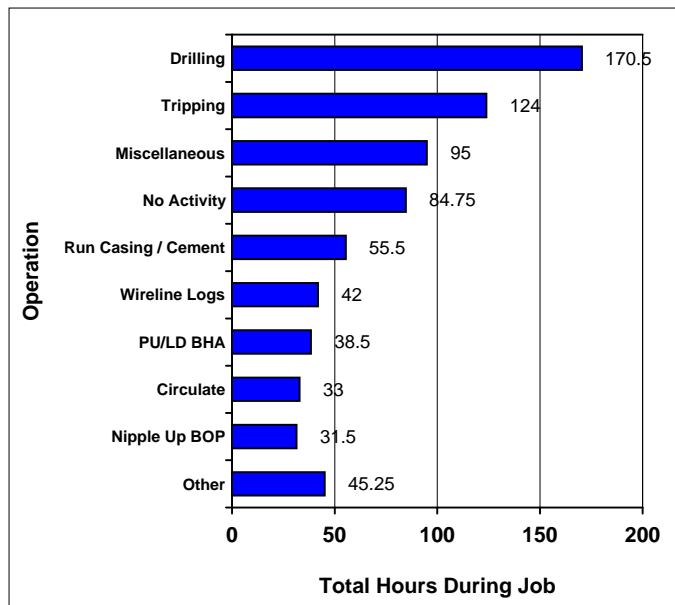
BIT # 3

Make : Security DBS
 Size : 12¼"
 Type : FMF3563Z
 Serial No : 10795300
 IADC : M223
 Jets : 6 x 20, 1 x 21,
 Tfa : 2.179
 Grading : 3-8-RO-S-X-I-HC-PR

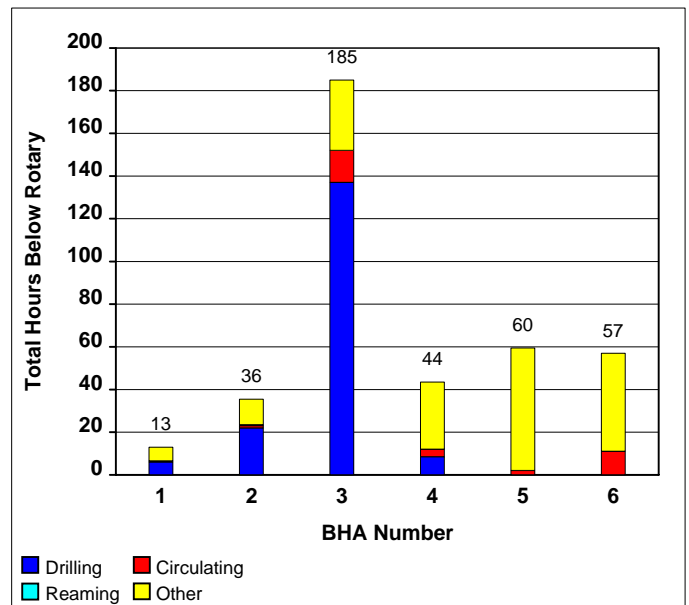
Bit #	Manufacturer	Style	OD (in)	Gge Len (in)	Nozzles (/32's)	TFA (in²)	Dull Grades I O D L B G O R	Ftge (m)	Drig hrs	ROP (m/hr)
1	Hughes	MX-1	17.500		3x12	0.331	1-1-WT-A -E-I-NO-TD	68	6.00	11
2	Varel	ETR 1G	23.000		2x22, 1x18, 1x16	1.187	1-1-BU-A -E-I-WT-TD	420	20.50	20
3	Security DBS	FMF3563Z	12.250	18.000	6x20, 1x21	2.179	3-8-RO-S -X-I-HC-PR	2496	135.50	18
4	Hycalog	RSX516S-A1	12.250	16.500	7x18	1.740	2-1-CT-C -X-I-N -DSF	111	8.50	13

Table 3 - Bit Run Summary

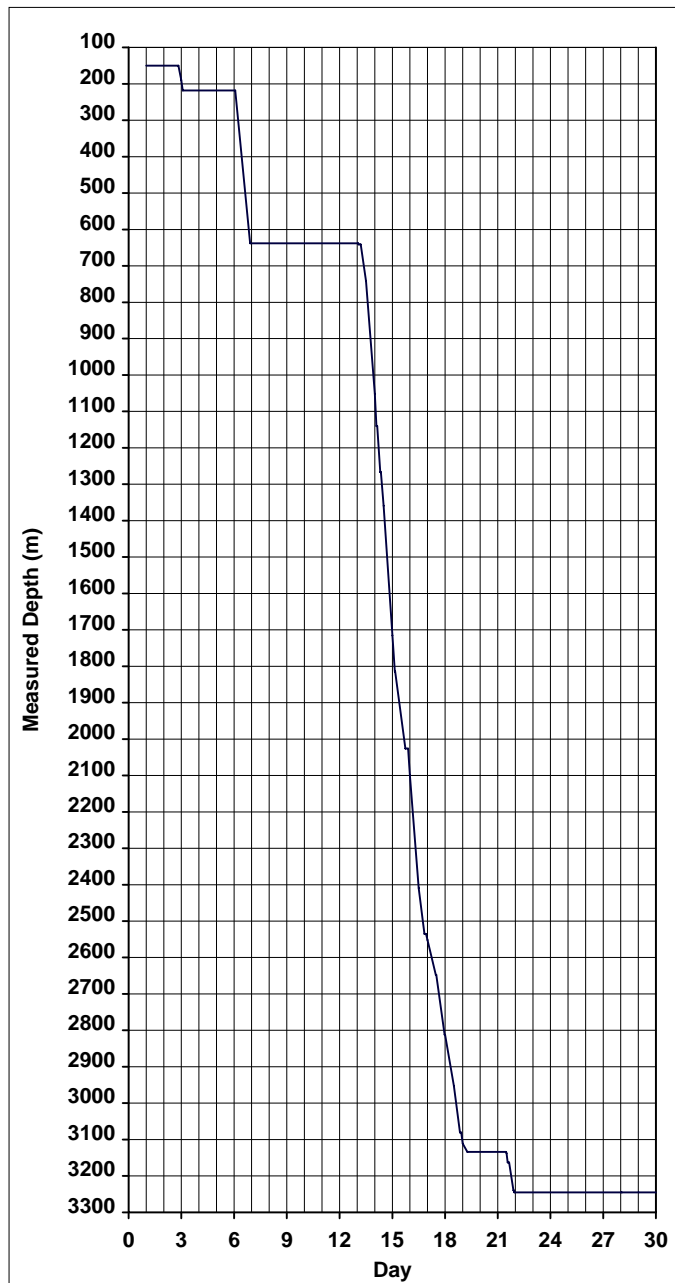
Hours by Operation Summary



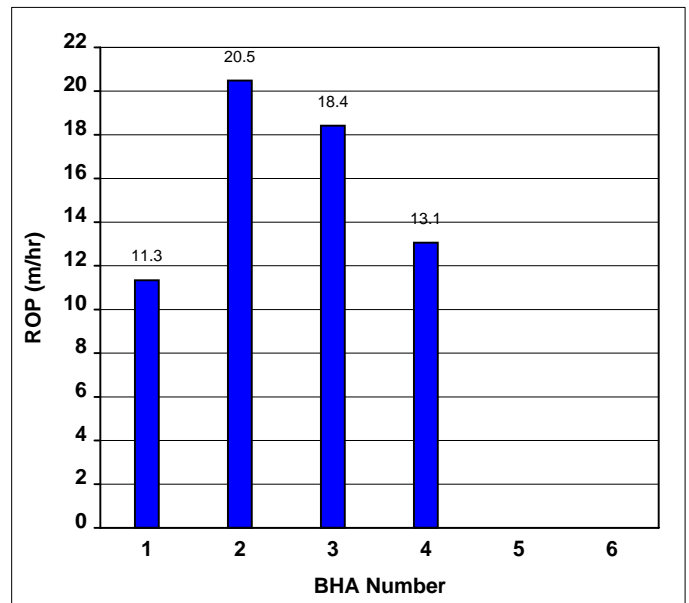
Hours per BHA Breakdown



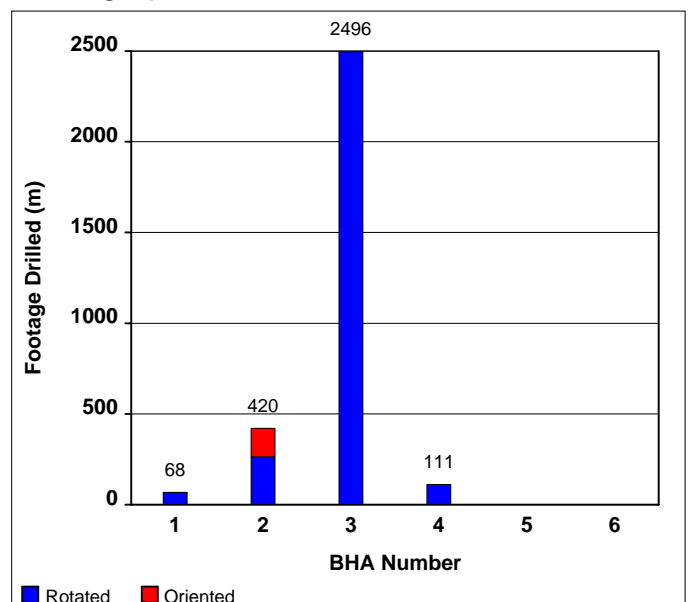
Days vs. Depth



Average Rate of Penetration per BHA



Footage per BHA



MD (m)	Formation Name MD/TVD	Inclination — DLS —	Bit Data	Drilling Parameters	Motor	BHA Stabilizers	Comments	BHA ID
100	Port Campbell Lst 150 / 150		MX-1 3x12 /32's 0.19 m/min 6.00 hrs	WOB 4 klbs RPM 80 FLO 1100 gpm SPP 1250 psi		29.750 in @ 25.10 m		#1 @ 150
300	Gellibrand Marl 407 / 407		ETR 1G 2x22,1x18,1x16 /32's 0.34 m/min 20.50 hrs	WOB 18 klbs RPM 96 FLO 1022 gpm SPP 1724 psi	9-5/8" SperryDrill 6/7 L 1.15° ABH	22.750 in @ 1.27 m 23.000 in @ 29.71 m	Nudge to 5 degrees.	#2 @ 218
500	Mid Miocene 485 / 485							
700	Lower Gellibrand 806 / 801		FMF3563Z 6x20, 1x21 /32's 0.31 m/min 135.50 hrs	WOB 21 klbs RPM 156 FLO 1034 gpm SPP 3106 psi		12.063 in @ 6.73 m 11.938 in @ 19.70 m		#3 @ 638
900								
1100								
1300	Narrawarturk Marl 1302 / 1172							
1500	Mepunga Sandstone 1384 / 1227							
1700	Dilwyn Sandstone 1528 / 1327							
1900	Lower Massacre 1698 / 1443							
2100	Paaratte Formation 1800 / 1511							
2300	Skull Creek Sst 2146 / 1748							
2500	Top of Belfast 2158 / 1756							
2700								
2900	Unit-1 Thylacine Mbr 2804 / 2206							
3100	Unit-2 2933 / 2307							
3300	Unit-4 Flaxmans Form 2993 / 2355							
	Unit 5a Waarre Form 3176 / 2511		RSX516S-A1 7x18 /32's 0.22 m/min 8.50 hrs	WOB 31 klbs RPM 136 FLO 985 gpm SPP 3604 psi		12.063 in @ 6.62 m 11.938 in @ 19.59 m		#4 @ 3134

HALLIBURTON

Sperry Drilling Services

Woodside Energy-Otway Gas Development

Otway Gas Development

Thylacine Platform

THA04 - Slot Slot 2

Thylacine South-1

Design: Thylacine South-1

Standard Survey Report

30 June, 2006



Company:	Woodside Energy-Otway Gas Development	Local Co-ordinate Reference:	Well THA04 - Slot Slot 2
Project:	Otway Gas Development	TVD Reference:	RT Revised @ 50.50m ()
Site:	Thylacine Platform	MD Reference:	RT Revised @ 50.50m ()
Well:	THA04	North Reference:	Grid
Wellbore:	Thylacine South-1	Survey Calculation Method:	Minimum Curvature
Design:	Thylacine South-1	Database:	EDM 2003.14 Single User Db

Project	Otway Gas Development, Otway Basin, Australia		
Map System:	Universal Transverse Mercator	System Datum:	Lowest Astronomical Tide
Geo Datum:	GDA94		
Map Zone:	Zone 54S (138 E to 144 E)		

Site	Thylacine Platform, T/30P				
Site Position:		Northing:	5,655,160.20m	Latitude:	39° 14' 14.451 S
From:	Map	Easting:	664,161.60m	Longitude:	142° 54' 7.603 E
Position Uncertainty:	0.00 m	Slot Radius:	0.00mm	Grid Convergence:	-1.20 °

Well	THA04 - Slot Slot 2, Initially a pilot then horizontal					
Well Position	+N-S	0.00 m	Northing:	5,655,156.80 m	Latitude:	39° 14' 14.562 S
	+E-W	0.00 m	Easting:	664,161.00 m	Longitude:	142° 54' 7.581 E
Position Uncertainty		0.00 m	Wellhead Elevation:	m	Water Depth:	99.50 m

Wellbore	Thylacine South-1				
Magnetics	Model Name	Sample Date	Declination (°)	Dip Angle (°)	Field Strength (nT)
	bggm2005	10/03/2006	11.11	-70.34	61,061

Design	Thylacine South-1				
Audit Notes:					
Version:	7	Phase:	ACTUAL	Tie On Depth:	0.00
Vertical Section:	Depth From (TVD) (m)	+N/-S (m)	+E/-W (m)	Direction (°)	
	0.00	0.00	0.00	145.00	

Survey Program	Date	30/06/2006			
From (m)	To (m)	Survey (Wellbore)	Tool Name	Description	
150.00	647.17	THA04S0-MWD1 (Thylacine South-1)	MWD+SAG	MWD + Sag correction	
650.08	3,250.19	THA04S0-MWD2 (Thylacine South-1)	MWD+SAG	MWD + Sag correction	

Survey									
Measured Depth (m)	Inclination (°)	Azimuth (°)	Vertical Depth (m)	+N/-S (m)	+E/-W (m)	Vertical Section (m)	Dogleg Rate (°/30m)	Build Rate (°/30m)	Turn Rate (°/30m)
0.00	0.00	0.00	0.00	0.00	0.00	0.00	0.000	0.00	0.00
150.00	0.00	360.00	150.00	0.00	0.00	0.00	0.000	0.00	0.00
226.25	0.42	43.55	226.25	0.20	0.19	-0.06	0.165	0.17	0.00
255.20	0.96	220.86	255.20	0.10	0.11	-0.02	1.430	0.56	183.74
284.12	2.66	155.31	284.11	-0.70	0.23	0.70	2.516	1.76	-68.00
313.07	2.14	162.30	313.03	-1.82	0.67	1.88	0.617	-0.54	7.24
341.94	3.55	171.66	341.86	-3.22	0.97	3.19	1.538	1.47	9.73
370.92	3.93	170.22	370.78	-5.09	1.27	4.89	0.405	0.39	-1.49
399.86	3.24	173.19	399.66	-6.88	1.53	6.51	0.740	-0.72	3.08
428.80	4.39	168.71	428.54	-8.77	1.85	8.25	1.231	1.19	-4.64
457.72	2.85	179.35	457.40	-10.58	2.07	9.85	1.736	-1.60	11.04
486.67	3.24	186.06	486.31	-12.11	1.99	11.06	0.547	0.40	6.95
515.59	2.78	184.56	515.19	-13.62	1.85	12.22	0.484	-0.48	-1.56
544.56	1.80	179.31	544.14	-14.78	1.80	13.14	1.037	-1.01	-5.44
573.45	3.58	179.65	572.99	-16.13	1.81	14.26	1.848	1.85	0.35
602.12	3.46	176.60	601.61	-17.89	1.87	15.73	0.233	-0.13	-3.19

Company:	Woodside Energy-Otway Gas Develop	Local Co-ordinate Reference:	Well THA04 - Slot Slot 2
Project:	Otway Gas Development	TVD Reference:	RT Revised @ 50.50m ()
Site:	Thylacine Platform	MD Reference:	RT Revised @ 50.50m ()
Well:	THA04	North Reference:	Grid
Wellbore:	Thylacine South-1	Survey Calculation Method:	Minimum Curvature
Design:	Thylacine South-1	Database:	EDM 2003.14 Single User Db

Survey									
Measured Depth (m)	Inclination (°)	Azimuth (°)	Vertical Depth (m)	+N/-S (m)	+E/-W (m)	Vertical Section (m)	Dogleg Rate (°/30m)	Build Rate (°/30m)	Turn Rate (°/30m)
632.40	4.43	175.80	631.82	-19.97	2.01	17.51	0.960	0.96	-0.80
18 5/8" Casing									
647.17	4.90	175.52	646.54	-21.17	2.10	18.54	0.960	0.96	-0.56
676.14	7.93	161.08	675.33	-24.29	2.84	21.53	3.531	3.14	-14.95
705.07	10.98	147.04	703.86	-28.49	4.99	26.20	3.943	3.16	-14.56
733.99	13.71	145.38	732.11	-33.63	8.44	32.38	2.855	2.83	-1.72
762.95	15.72	147.39	760.12	-39.76	12.50	39.74	2.148	2.08	2.08
791.91	19.87	149.32	787.69	-47.30	17.13	48.57	4.342	4.30	2.00
819.85	23.63	149.63	813.64	-56.22	22.38	58.89	4.039	4.04	0.33
848.78	27.19	147.27	839.76	-66.78	28.89	71.28	3.837	3.69	-2.45
878.06	30.34	145.99	865.43	-78.54	36.65	85.36	3.288	3.23	-1.31
906.53	32.85	145.70	889.68	-90.88	45.02	100.27	2.650	2.64	-0.31
935.43	35.16	144.33	913.63	-104.12	54.29	116.43	2.526	2.40	-1.42
964.35	37.68	144.11	936.90	-118.05	64.33	133.60	2.618	2.61	-0.23
993.31	40.93	147.56	959.31	-133.23	74.61	151.93	4.056	3.37	3.57
1,022.23	43.93	149.18	980.66	-149.85	84.84	171.41	3.312	3.11	1.68
1,051.18	46.85	148.81	1,000.98	-167.51	95.45	191.96	3.038	3.03	-0.38
1,080.09	47.35	148.05	1,020.66	-185.55	106.54	213.10	0.777	0.52	-0.79
1,109.10	48.49	146.90	1,040.11	-203.70	118.12	234.61	1.473	1.18	-1.19
1,138.05	46.18	146.53	1,059.72	-221.50	129.80	255.89	2.410	-2.39	-0.38
1,167.02	45.93	146.35	1,079.83	-238.88	141.33	276.74	0.292	-0.26	-0.19
1,195.94	46.58	146.75	1,099.82	-256.31	152.85	297.63	0.738	0.67	0.41
1,253.82	47.22	147.01	1,139.37	-291.71	175.94	339.87	0.346	0.33	0.13
1,282.65	47.41	145.81	1,158.92	-309.36	187.66	361.05	0.939	0.20	-1.25
1,311.59	47.20	144.90	1,178.54	-326.86	199.75	382.32	0.727	-0.22	-0.94
1,340.54	47.38	145.08	1,198.18	-344.28	211.96	403.59	0.231	0.19	0.19
1,369.45	47.81	145.07	1,217.68	-361.78	224.18	424.94	0.446	0.45	-0.01
1,398.39	47.46	145.19	1,237.18	-379.33	236.40	446.32	0.374	-0.36	0.12
1,427.36	46.36	145.56	1,256.97	-396.74	248.42	467.48	1.173	-1.14	0.38
1,456.22	46.10	146.53	1,276.93	-414.02	260.06	488.31	0.777	-0.27	1.01
1,485.21	45.78	146.61	1,297.09	-431.41	271.54	509.14	0.336	-0.33	0.08
1,514.17	45.74	146.90	1,317.29	-448.76	282.91	529.87	0.219	-0.04	0.30
1,543.09	46.03	147.73	1,337.42	-466.23	294.13	550.62	0.687	0.30	0.86
1,572.17	46.93	149.41	1,357.45	-484.23	305.12	571.67	1.562	0.93	1.73
1,601.13	47.23	149.29	1,377.17	-502.47	315.93	592.81	0.324	0.31	-0.12
1,630.10	47.18	149.29	1,396.86	-520.75	326.79	614.01	0.052	-0.05	0.00
1,658.96	47.34	148.93	1,416.44	-538.94	337.67	635.15	0.321	0.17	-0.37
1,687.91	47.39	148.74	1,436.05	-557.16	348.69	656.40	0.154	0.05	-0.20
1,716.37	47.55	148.35	1,455.29	-575.05	359.64	677.34	0.347	0.17	-0.41
1,745.20	48.02	146.65	1,474.66	-593.06	371.11	698.67	1.398	0.49	-1.77
1,774.02	47.79	145.26	1,493.98	-610.78	383.08	720.05	1.100	-0.24	-1.45
1,802.94	47.53	144.71	1,513.46	-628.29	395.35	741.43	0.501	-0.27	-0.57
1,831.82	47.62	144.67	1,532.94	-645.68	407.67	762.74	0.098	0.09	-0.04
1,861.11	46.37	144.65	1,552.92	-663.16	420.06	784.16	1.280	-1.28	-0.02
1,890.32	47.16	145.68	1,572.93	-680.63	432.21	805.44	1.119	0.81	1.06
1,919.30	45.88	145.05	1,592.87	-697.93	444.16	826.47	1.407	-1.33	-0.65
1,948.25	45.66	145.11	1,613.06	-714.93	456.04	847.21	0.232	-0.23	0.06
1,977.18	46.19	144.68	1,633.19	-731.94	467.99	868.00	0.636	0.55	-0.45
2,006.14	46.59	145.31	1,653.16	-749.11	480.02	888.96	0.628	0.41	0.65
2,035.07	47.13	146.73	1,672.94	-766.62	491.81	910.07	1.212	0.56	1.47
2,064.04	47.10	147.37	1,692.66	-784.43	503.36	931.28	0.487	-0.03	0.66
2,092.96	47.47	146.74	1,712.28	-802.26	514.92	952.52	0.615	0.38	-0.65
2,121.85	47.42	146.02	1,731.82	-819.98	526.70	973.79	0.553	-0.05	-0.75
2,150.85	47.15	145.56	1,751.49	-837.60	538.68	995.10	0.448	-0.28	-0.48
2,179.82	46.93	145.41	1,771.23	-855.07	550.69	1,016.30	0.255	-0.23	-0.16
2,209.74	47.92	145.40	1,791.47	-873.21	563.20	1,038.33	0.993	0.99	-0.01
2,238.71	47.26	145.40	1,811.01	-890.82	575.35	1,059.72	0.683	-0.68	0.00
2,267.66	47.64	145.57	1,830.59	-908.39	587.43	1,081.05	0.415	0.39	0.18
2,296.58	47.60	144.17	1,850.08	-925.86	599.72	1,102.41	1.074	-0.04	-1.45
2,325.52	47.77	143.79	1,869.56	-943.17	612.31	1,123.80	0.340	0.18	-0.39

Company:	Woodside Energy-Otway Gas Develop	Local Co-ordinate Reference:	Well THA04 - Slot Slot 2
Project:	Otway Gas Development	TVD Reference:	RT Revised @ 50.50m ()
Site:	Thylacine Platform	MD Reference:	RT Revised @ 50.50m ()
Well:	THA04	North Reference:	Grid
Wellbore:	Thylacine South-1	Survey Calculation Method:	Minimum Curvature
Design:	Thylacine South-1	Database:	EDM 2003.14 Single User Db

Survey									
Measured Depth (m)	Inclination (°)	Azimuth (°)	Vertical Depth (m)	+N/-S (m)	+E/-W (m)	Vertical Section (m)	Dogleg Rate (°/30m)	Build Rate (°/30m)	Turn Rate (°/30m)
2,354.42	47.96	144.40	1,888.95	-960.53	624.87	1,145.23	0.509	0.20	0.63
2,383.35	47.84	144.18	1,908.35	-977.96	637.40	1,166.70	0.210	-0.12	-0.23
2,412.31	47.76	144.38	1,927.80	-995.37	649.93	1,188.15	0.174	-0.08	0.21
2,441.30	47.15	143.88	1,947.40	-1,012.68	662.44	1,209.50	0.737	-0.63	-0.52
2,470.19	46.65	143.70	1,967.14	-1,029.70	674.90	1,230.59	0.537	-0.52	-0.19
2,499.20	46.60	144.36	1,987.07	-1,046.77	687.29	1,251.68	0.499	-0.05	0.68
2,528.08	46.25	144.47	2,006.97	-1,063.78	699.47	1,272.60	0.373	-0.36	0.11
2,557.03	46.64	145.01	2,026.92	-1,080.92	711.58	1,293.58	0.573	0.40	0.56
2,585.96	46.08	145.26	2,046.89	-1,098.09	723.54	1,314.51	0.610	-0.58	0.26
2,614.94	45.35	146.13	2,067.12	-1,115.23	735.24	1,335.26	0.993	-0.76	0.90
2,643.82	44.82	145.33	2,087.51	-1,132.13	746.75	1,355.71	0.806	-0.55	-0.83
2,672.76	44.06	143.92	2,108.18	-1,148.65	758.48	1,375.97	1.291	-0.79	-1.46
2,701.73	43.48	142.57	2,129.10	-1,164.71	770.47	1,396.00	1.138	-0.60	-1.40
2,730.69	42.56	142.25	2,150.27	-1,180.37	782.52	1,415.74	0.980	-0.95	-0.33
2,759.63	41.41	140.26	2,171.78	-1,195.46	794.64	1,435.05	1.823	-1.19	-2.06
2,788.53	40.08	139.76	2,193.68	-1,209.92	806.76	1,453.84	1.422	-1.38	-0.52
2,817.47	39.15	138.60	2,215.97	-1,223.88	818.82	1,472.20	1.232	-0.96	-1.20
2,846.42	38.90	138.64	2,238.46	-1,237.56	830.87	1,490.32	0.260	-0.26	0.04
2,875.29	38.25	138.34	2,261.03	-1,251.04	842.80	1,508.20	0.703	-0.68	-0.31
2,904.16	37.82	138.19	2,283.77	-1,264.31	854.64	1,525.87	0.457	-0.45	-0.16
2,933.11	36.91	137.68	2,306.78	-1,277.36	866.41	1,543.30	0.996	-0.94	-0.53
2,962.06	36.71	137.53	2,329.96	-1,290.17	878.10	1,560.50	0.227	-0.21	-0.16
2,991.04	36.39	137.01	2,353.24	-1,302.84	889.81	1,577.60	0.461	-0.33	-0.54
3,019.98	34.71	135.83	2,376.78	-1,315.04	901.41	1,594.24	1.881	-1.74	-1.22
3,048.92	32.86	134.17	2,400.83	-1,326.42	912.78	1,610.09	2.143	-1.92	-1.72
3,077.84	32.46	132.91	2,425.18	-1,337.17	924.10	1,625.38	0.818	-0.41	-1.31
3,106.79	31.33	131.55	2,449.76	-1,347.45	935.42	1,640.30	1.388	-1.17	-1.41
3,135.04	29.56	130.15	2,474.12	-1,356.82	946.24	1,654.18	2.025	-1.88	-1.49
3,164.01	28.45	135.63	2,499.46	-1,366.36	956.53	1,667.90	2.981	-1.15	5.67
3,192.96	28.52	141.23	2,524.91	-1,376.68	965.68	1,681.60	2.768	0.07	5.80
3,221.85	28.85	150.16	2,550.26	-1,388.11	973.48	1,695.43	4.461	0.34	9.27
3,250.19	28.85	150.16	2,575.09	-1,399.97	980.28	1,709.05	0.000	0.00	0.00

Company:	Woodside Energy-Otway Gas Development	Local Co-ordinate Reference:	Well THA04 - Slot Slot 2
Project:	Otway Gas Development	TVD Reference:	RT Revised @ 50.50m ()
Site:	Thylacine Platform	MD Reference:	RT Revised @ 50.50m ()
Well:	THA04	North Reference:	Grid
Wellbore:	Thylacine South-1	Survey Calculation Method:	Minimum Curvature
Design:	Thylacine South-1	Database:	EDM 2003.14 Single User Db

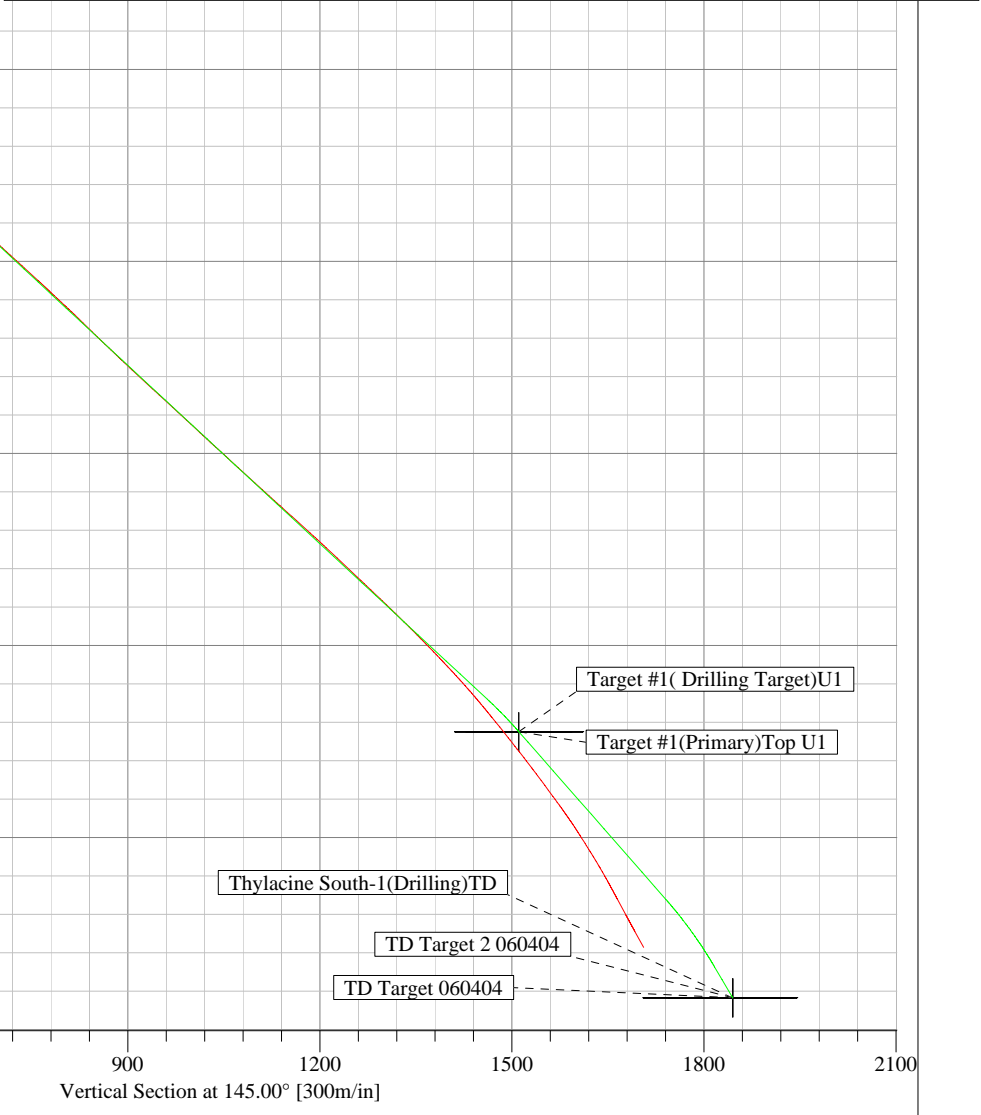
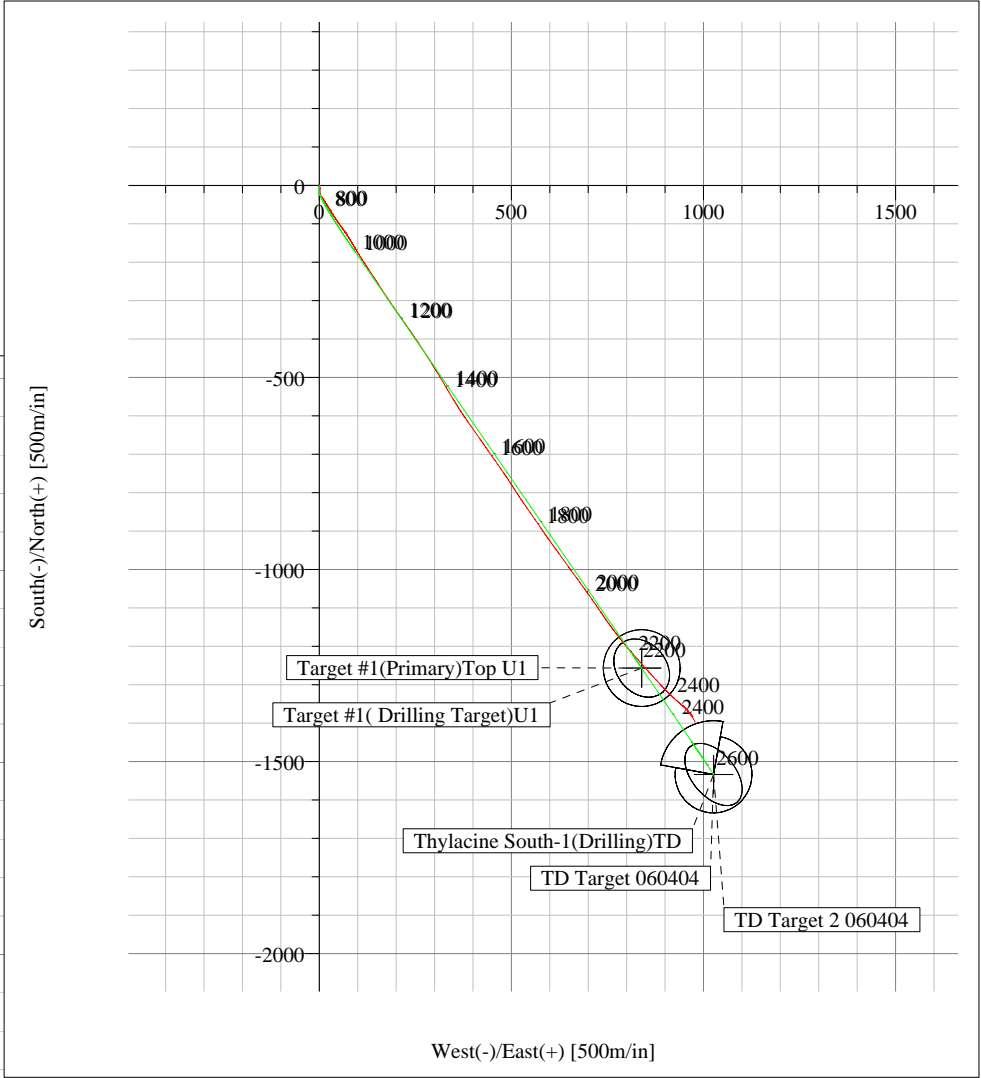
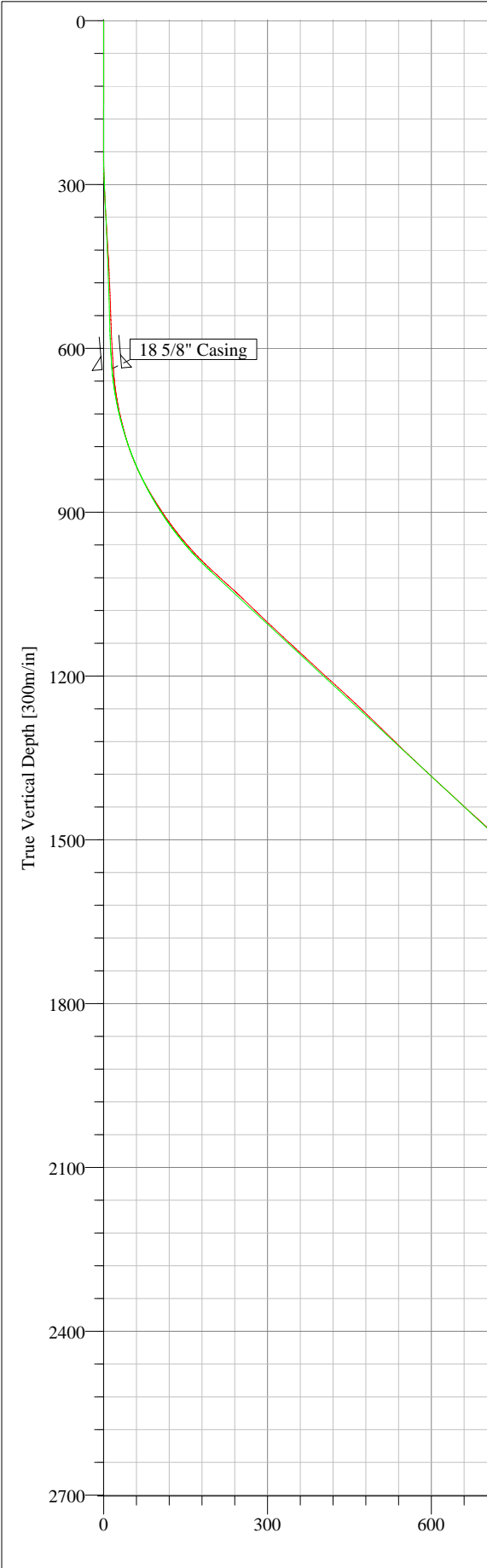
Casing Points				
Measured Depth (m)	Vertical Depth (m)	Name	Casing Diameter (mm)	Hole Diameter (mm)
632.40	631.82	18 5/8" Casing	473.07	609.60

Formations					
Measured Depth (m)	Vertical Depth (m)	Name	Lithology	Dip (°)	Dip Direction (°)
151.00	151.00	Sea Bed		0.00	0.00
407.21	407.00	Gellibrand Marl		0.00	0.00
485.36	485.00	Mid Miocene		0.00	0.00
805.07	800.00	Near Top Oligocene		0.00	0.00
1,299.01	1,170.00	Narrawatuk Marl		0.00	0.00
1,411.38	1,246.00	Mepunga Sandstone		0.00	0.00
1,546.80	1,340.00	Dilwyn Sandstone		0.00	0.00
1,782.97	1,500.00	Lower Massacre		0.00	0.00
1,946.73	1,612.00	Timboon		0.00	0.00
2,027.81	1,668.00	Skull Creek		0.00	0.00
2,195.67	1,782.00	Intra Skull Creek Marker		0.00	0.00
2,841.97	2,235.00	Top Reservoir Unit 1		0.00	0.00
2,990.75	2,353.00	Top Unit 2		0.00	0.00
3,012.93	2,371.00	Top Unit 4 (Flaxman)		0.00	0.00
3,132.61	2,472.00	Top Unit 5a (Waarre)		0.00	0.00

Checked By: _____ Approved By: _____ Date: _____

Field: Otway Gas Development
Site: Thylacine Platform
Well: THA04
Wellpath: Thylacine South-1
Plan: THA04S1P5

LEGEND
Thylacine South-1
THA04S0P5



WELLBORE SURVEY										DRILLING PARAMETERS									
Measured Depth (m)	Incl Angle (deg)	Azi Dir (deg)	Vertical Depth (m)	Vertical Section (m)	Coordinates N/S (m) E/W (m)		DLS (°/30m)	Build Rate (°/30m)	Turn Rate (°/30m)	WOB (klbs)	RPM	Flow Rate (gpm)	Stand Pipe (psi)	Orientation From (m) To (m)		Tool Face (deg)	ROP (m/hr)	BHA No. (#)	Comment
0.00	0.00	0.00	0.0	0.0	0.0	0.0	0.00	0.00	0.00										
150.00	0.00	360.00	150.0	0.0	0.0	0.0	0.00	0.00	0.00									1	
226.25	0.42	43.55	226.2	-0.1	0.2	0.2	0.17	0.17	0.00	10		700	840	224	226	180m	35	2	
255.20	0.96	220.86	255.2	0.0	0.1	0.1	1.43	0.56	0.00	5		750	920	226	243	180m	45	2	
														243	255	180m		2	
284.12	2.66	155.31	284.1	0.7	-0.7	0.2	2.52	1.76	0.00	5		800	1040	255	272	180m	15	2	
														272	284	180m		2	
313.07	2.14	162.30	313.0	1.9	-1.8	0.7	0.62	-0.54	7.24	20	80	850	1200	284	301	180m	70	2	
341.94	3.55	171.66	341.9	3.2	-3.2	1.0	1.54	1.47	9.73	15		900	1330	330	342	180m	70	2	
370.92	3.93	170.22	370.8	4.9	-5.1	1.3	0.41	0.39	-1.49	15	100	1000	1480	342	359	180m	60	2	
399.86	3.24	173.19	399.7	6.5	-6.9	1.5	0.74	-0.72	3.08	15	100	1140	2000				70	2	
428.80	4.39	168.71	428.5	8.2	-8.8	1.8	1.23	1.19	-4.64	20	100	1160	2100	417	427	10R	70	2	
457.72	2.85	179.35	457.4	9.9	-10.6	2.1	1.74	-1.60	11.04	15	100	1150	2100	446	456	150R	60	2	
486.67	3.24	186.06	486.3	11.1	-12.1	2.0	0.55	0.40	6.95	20	100	1150	2100				40	2	
515.59	2.78	184.56	515.2	12.2	-13.6	1.9	0.48	-0.48	-1.56	20	100	1150	2150	504	514	150L	35	2	
544.56	1.80	179.31	544.1	13.1	-14.8	1.8	1.04	-1.01	-5.44	20	100	1150	2150				30	2	
573.45	3.58	179.65	573.0	14.3	-16.1	1.8	1.85	1.85	0.35	30	100	1150	2150	561	572	180m	25	2	
602.12	3.46	176.60	601.6	15.7	-17.9	1.9	0.23	-0.13	-3.19	35	100	1150	2200				25	2	
647.17	4.90	175.52	646.5	18.5	-21.2	2.1	0.96	0.96	-0.72	5	80	1150	3050	619	629	20L	30	3	
676.14	7.93	161.08	675.3	21.5	-24.3	2.8	3.53	3.14	-14.95	5	80	1150	3050				20	3	
705.07	10.98	147.04	703.9	26.2	-28.5	5.0	3.94	3.16	-14.56	10	140	1150	3050				15	3	
733.99	13.71	145.38	732.1	32.4	-33.6	8.4	2.86	2.83	-1.72	10	180	1150	3050				30	3	
762.95	15.72	147.39	760.1	39.7	-39.8	12.5	2.15	2.08	2.08	15	180	1150	3050				30	3	
791.91	19.87	149.32	787.7	48.6	-47.3	17.1	4.34	4.30	2.00	15	140	1150	3100				30	3	
819.85	23.63	149.63	813.6	58.9	-56.2	22.4	4.04	4.04	0.33	15	180	1150	3100				40	3	
848.78	27.19	147.27	839.8	71.3	-66.8	28.9	3.84	3.69	-2.45	15	180	1150	3100				40	3	
878.06	30.34	145.99	865.4	85.4	-78.5	36.6	3.29	3.23	-1.31	15	180	1150	3100				30	3	
906.53	32.85	145.70	889.7	100.3	-90.9	45.0	2.65	2.64	-0.31	15	180	1150	3150				40	3	
935.43	35.16	144.33	913.6	116.4	-104.1	54.3	2.53	2.40	-1.42	15	180	1150	3150				50	3	
964.35	37.68	144.11	936.9	133.6	-118.0	64.3	2.62	2.61	-0.23	15	180	1150	3150				50	3	

Customer : Woodside Energy Ltd
Well : Thylacine South 1
Rig : Maersk Guardian

Field : Thylacine
Lease : Thylacine
Job # : AU-DD-0003930656

Page : 2

North Ref : Grid **Declination :** 11.11° **VS Dir :** 145.00° (from Wellhead)

WELLBORE SURVEY										DRILLING PARAMETERS									
Measured Depth (m)	Incl Angle (deg)	Azi Dir (deg)	Vertical Depth (m)	Vertical Section (m)	Coordinates N/S (m) E/W (m)		DLS (°/30m)	Build Rate (°/30m)	Turn Rate (°/30m)	WOB (klbs)	RPM	Flow Rate (gpm)	Stand Pipe (psi)	Orientation From (m) To (m)		Tool Face (deg)	ROP (m/hr)	BHA No. (#)	Comment
993.31	40.93	147.56	959.3	151.9	-133.2	74.6	4.06	3.37	3.57	15	180	1150	3150				50	3	
1022.23	43.93	149.18	980.7	171.4	-149.8	84.8	3.31	3.11	1.68	15	180	1150	3200				60	3	
1051.18	46.85	148.81	1001.0	192.0	-167.5	95.5	3.04	3.03	-0.38	15	180	1150	3200				80	3	
1080.09	47.35	148.05	1020.7	213.1	-185.6	106.5	0.78	0.52	-0.79	15	180	1150	3200				70	3	
1109.10	48.49	146.90	1040.1	234.6	-203.7	118.1	1.47	1.18	-1.19	15	180	1150	3200				70	3	
1138.05	46.18	146.53	1059.7	255.9	-221.5	129.8	2.41	-2.39	-0.38	15	180	1000	2400				70	3	
1167.02	45.93	146.35	1079.8	276.7	-238.9	141.3	0.29	-0.26	-0.19	15	180	1000	2400				85	3	
1195.94	46.58	146.75	1099.8	297.6	-256.3	152.8	0.74	0.67	0.41	15	180	1000	2400				95	3	
1253.82	47.22	147.01	1139.4	339.9	-291.7	175.9	0.35	0.33	0.13	15	180	1000	2100				80	3	
1282.65	47.41	145.81	1158.9	361.1	-309.4	187.7	0.94	0.20	-1.25	15	180	985	2100				75	3	
1311.59	47.20	144.90	1178.5	382.3	-326.9	199.8	0.73	-0.22	-0.94	15	180	985	2100				98	3	
1340.54	47.38	145.08	1198.2	403.6	-344.3	212.0	0.23	0.19	0.19	15	180	985	2100				75	3	
1369.45	47.81	145.07	1217.7	424.9	-361.8	224.2	0.45	0.45	-0.01	15	180	980	2135				75	3	
1398.39	47.46	145.19	1237.2	446.3	-379.3	236.4	0.37	-0.36	0.12	15	180	980	2600				80	3	
1427.36	46.36	145.56	1257.0	467.5	-396.7	248.4	1.17	-1.14	0.38	12	180	980	2600				50	3	
1456.22	46.10	146.53	1276.9	488.3	-414.0	260.1	0.78	-0.27	1.01	20	180	980	2750				19	3	
1485.21	45.78	146.61	1297.1	509.1	-431.4	271.5	0.34	-0.33	0.08	20	180	980	2750				50	3	
1514.17	45.74	146.90	1317.3	529.9	-448.8	282.9	0.22	-0.04	0.30	15	180	980	2750				20	3	
1543.09	46.03	147.73	1337.4	550.6	-466.2	294.1	0.69	0.30	0.86	15	180	980	2750				60	3	
1572.17	46.93	149.41	1357.5	571.7	-484.2	305.1	1.56	0.93	1.73	15	150	1150	3700				90	3	
1601.13	47.23	149.29	1377.2	592.8	-502.5	315.9	0.32	0.31	-0.12	15	150	1150	3700				60	3	
1630.10	47.18	149.29	1396.9	614.0	-520.7	326.8	0.05	-0.05	0.00	15	150	1150	3700				80	3	
1658.96	47.34	148.93	1416.4	635.2	-538.9	337.7	0.32	0.17	-0.37	15	150	980	2800				80	3	
1687.91	47.39	148.74	1436.0	656.4	-557.2	348.7	0.15	0.05	-0.20	15	150	980	2800				90	3	
1716.37	47.55	148.35	1455.3	677.3	-575.1	359.6	0.35	0.17	-0.41	19	150	980	2800				85	3	
1745.20	48.02	146.65	1474.7	698.7	-593.1	371.1	1.40	0.49	-1.77	19	150	980	2800				85	3	
1774.02	47.79	145.26	1494.0	720.0	-610.8	383.1	1.10	-0.24	-1.45	22	140	985	2900				85	3	
1802.94	47.53	144.71	1513.5	741.4	-628.3	395.3	0.50	-0.27	-0.57	22	140	985	2900				85	3	
1831.82	47.62	144.67	1532.9	762.7	-645.7	407.7	0.10	0.09	-0.04	22	140	985	2900				85	3	
1861.11	46.37	144.65	1552.9	784.2	-663.2	420.1	1.28	-1.28	-0.02	22	140	985	2900				85	3	
1890.32	47.16	145.68	1572.9	805.4	-680.6	432.2	1.12	0.81	1.06	20	140	985	2950				85	3	

Customer : Woodside Energy Ltd
Well : Thylacine South 1
Rig : Maersk Guardian

Field : Thylacine
Lease : Thylacine
Job # : AU-DD-0003930656

North Ref : Grid **Declination :** 11.11° **VS Dir :** 145.00° (from Wellhead)

WELLBORE SURVEY										DRILLING PARAMETERS									
Measured Depth (m)	Incl Angle (deg)	Azi Dir (deg)	Vertical Depth (m)	Vertical Section (m)	Coordinates N/S (m) E/W (m)		DLS (°/30m)	Build Rate (°/30m)	Turn Rate (°/30m)	WOB (klbs)	RPM	Flow Rate (gpm)	Stand Pipe (psi)	Orientation From (m) To (m)		Tool Face (deg)	ROP (m/hr)	BHA No. (#)	Comment
1919.30	45.88	145.05	1592.9	826.5	-697.9	444.2	1.41	-1.33	-0.65	20	150	985	2950				85	3	
1948.25	45.66	145.11	1613.1	847.2	-714.9	456.0	0.23	-0.23	0.06	20	150	985	2950				80	3	
1977.18	46.19	144.68	1633.2	868.0	-731.9	468.0	0.64	0.55	-0.45	20	150	985	3000				80	3	
2006.14	46.59	145.31	1653.2	889.0	-749.1	480.0	0.63	0.41	0.65	20	150	985	3000				80	3	
2035.07	47.13	146.73	1672.9	910.1	-766.6	491.8	1.21	0.56	1.47	20	150	985	3000				70	3	
2064.04	47.10	147.37	1692.7	931.3	-784.4	503.4	0.49	-0.03	0.66	20	150	985	3000				75	3	
2092.96	47.47	146.74	1712.3	952.5	-802.3	514.9	0.61	0.38	-0.65	20	150	985	3000				75	3	
2121.85	47.42	146.02	1731.8	973.8	-820.0	526.7	0.55	-0.05	-0.75	20	150	985	3000				65	3	
2150.85	47.15	145.56	1751.5	995.1	-837.6	538.7	0.45	-0.28	-0.48	25	140	985	3100				50	3	
2179.82	46.93	145.41	1771.2	1016.3	-855.1	550.7	0.25	-0.23	-0.16	25	140	985	3100				40	3	
2209.74	47.92	145.40	1791.5	1038.3	-873.2	563.2	0.99	0.99	-0.01	30	150	985	3100				55	3	
2238.71	47.26	145.40	1811.0	1059.7	-890.8	575.3	0.68	-0.68	0.00	30	150	985	3200				60	3	
2267.66	47.64	145.57	1830.6	1081.0	-908.4	587.4	0.41	0.39	0.18	30	150	985	3200				55	3	
2296.58	47.60	144.17	1850.1	1102.4	-925.9	599.7	1.07	-0.04	-1.45	30	150	985	3200				55	3	
2325.52	47.77	143.79	1869.6	1123.8	-943.2	612.3	0.34	0.18	-0.39	30	150	985	3200				60	3	
2354.42	47.96	144.40	1889.0	1145.2	-960.5	624.9	0.51	0.20	0.63	30	180	985	3200				55	3	
2383.35	47.84	144.18	1908.3	1166.7	-978.0	637.4	0.21	-0.12	-0.23	30	180	985	3200				60	3	
2412.31	47.76	144.38	1927.8	1188.1	-995.4	649.9	0.17	-0.08	0.21	30	180	985	3200				60	3	
2441.30	47.15	143.88	1947.4	1209.5	-1012.7	662.4	0.74	-0.63	-0.52	28	150	985	3200				50	3	
2470.19	46.65	143.70	1967.1	1230.6	-1029.7	674.9	0.54	-0.52	-0.19	28	150	985	3200				50	3	
2499.20	46.60	144.36	1987.1	1251.7	-1046.8	687.3	0.50	-0.05	0.68	25	180	985	3200				60	3	
2528.08	46.25	144.47	2007.0	1272.6	-1063.8	699.5	0.37	-0.36	0.11	25	150	985	3200				50	3	
2557.03	46.64	145.01	2026.9	1293.6	-1080.9	711.6	0.57	0.40	0.56	25	150	985	3200				50	3	
2585.96	46.08	145.26	2046.9	1314.5	-1098.1	723.5	0.61	-0.58	0.26	25	130	985	3200				45	3	
2614.94	45.35	146.13	2067.1	1335.3	-1115.2	735.2	0.99	-0.76	0.90	25	130	985	3200				30	3	
2643.82	44.82	145.33	2087.5	1355.7	-1132.1	746.8	0.81	-0.55	-0.83	25	130	985	3300				25	3	
2672.76	44.06	143.92	2108.2	1376.0	-1148.7	758.5	1.29	-0.79	-1.46	25	130	985	3200				30	3	
2701.73	43.48	142.57	2129.1	1396.0	-1164.7	770.5	1.14	-0.60	-1.40	25	130	985	3200				30	3	
2730.69	42.56	142.25	2150.3	1415.7	-1180.4	782.5	0.98	-0.95	-0.33	25	130	1110	4100				30	3	
2759.63	41.41	140.26	2171.8	1435.1	-1195.5	794.6	1.82	-1.19	-2.06	25	130	1110	4100				30	3	
2788.53	40.08	139.76	2193.7	1453.8	-1209.9	806.8	1.42	-1.38	-0.52	25	130	1110	4100				30	3	

Customer : Woodside Energy Ltd
Well : Thylacine South 1
Rig : Maersk Guardian

Field : Thylacine
Lease : Thylacine
Job # : AU-DD-0003930656

Page : 4

North Ref : Grid **Declination :** 11.11° **VS Dir :** 145.00° (from Wellhead)

WELLBORE SURVEY										DRILLING PARAMETERS									
Measured Depth (m)	Incl Angle (deg)	Azi Dir (deg)	Vertical Depth (m)	Vertical Section (m)	Coordinates		DLS (°/30m)	Build Rate (°/30m)	Turn Rate (°/30m)	WOB (klbs)	RPM	Flow Rate (gpm)	Stand Pipe (psi)	Orientation		Tool Face (deg)	ROP (m/hr)	BHA No. (#)	Comment
					N/S (m)	E/W (m)								From (m)	To (m)				
2817.47	39.15	138.60	2216.0	1472.2	-1223.9	818.8	1.23	-0.96	-1.20	25	130	1110	4100				25	3	
2846.42	38.90	138.64	2238.5	1490.3	-1237.6	830.9	0.26	-0.26	0.04	25	130	1110	4100				28	3	
2875.29	38.25	138.34	2261.0	1508.2	-1251.0	842.8	0.70	-0.68	-0.31	28	150	1110	4100				28	3	
2904.16	37.82	138.19	2283.8	1525.9	-1264.3	854.6	0.46	-0.45	-0.16	24	150	1110	4100				23	3	
2933.11	36.91	137.68	2306.8	1543.3	-1277.4	866.4	1.00	-0.94	-0.53	27	130	1110	4100				18	3	
2962.06	36.71	137.53	2330.0	1560.5	-1290.2	878.1	0.23	-0.21	-0.16	28	140	985	3300				18	3	
2991.04	36.39	137.01	2353.2	1577.6	-1302.8	889.8	0.46	-0.33	-0.54	28	140	985	3350				30	3	
3019.98	34.71	135.83	2376.8	1594.2	-1315.0	901.4	1.88	-1.74	-1.22	28	140	985	3400				30	3	
3048.92	32.86	134.17	2400.8	1610.1	-1326.4	912.8	2.14	-1.92	-1.72	28	140	985	3400				60	3	
3077.84	32.46	132.91	2425.2	1625.4	-1337.2	924.1	0.82	-0.41	-1.31	35	140	985	3450				30	3	
3106.79	31.33	131.55	2449.8	1640.3	-1347.5	935.4	1.39	-1.17	-1.41	38	150	985	3450				60	3	
3135.04	29.56	130.15	2474.1	1654.2	-1356.8	946.2	2.02	-1.88	-1.49	45	110	985	3450				5	4	
3164.01	28.45	135.63	2499.5	1667.9	-1366.4	956.5	2.98	-1.15	5.67	45	110	985	3450				5	4	
3192.96	28.52	141.23	2524.9	1681.6	-1376.7	965.7	2.77	0.07	5.80	25	150	985	3725				25	4	
3221.85	28.85	150.16	2550.3	1695.4	-1388.1	973.5	4.46	0.34	9.27	25	150	985	3660				13	4	
3250.19	28.85	150.16	2575.1	1709.1	-1400.0	980.3	0.00	0.00	0.00	25	140	985	3160				25		

sperry-sun

DRILLING SERVICES

BHA Report

Customer : Woodside Energy Ltd

Well : Thylacine South 1

Field : Thylacine

Lease : Thylacine

Rig : Maersk Guardian

Job # : AU-DD-0003930656

BHA# 1

BHA# 1 : Date In :17/03/200 MD In (m) : 150 TVD In (m) : 150 Date Out 18/03/2006 MD Out (m): 218 TVD Out (m): 218

BIT DATA

Bit #	OD (in)	MFR	Style	Serial#	Nozzles (/32's)	TFA (in ²)	Dull Condition
1	17.500	Hughes	MX-1	T1852-0	3x12	0.331	1-1-WT-A -E-I-NO-TD

MOTOR DATA

Run #	OD (in)	MFR	Model	Serial#	Bend	Nzl (/32's)	Avg Dif (psi)	Cum Circ Hrs

COMPONENT DATA

Item #	Description	Serial #	OD (in)	ID (in)	Gauge (in)	Weight (lbs/ft)	Top Con	Length (m)	Bit - Center Blade (m)
1	17½" Mill Tooth Tri-Cone	T1852-0	17.500	3.000	17.500	795.63	B 7-5/8" Reg	0.42	
2	30" Hole Opener		9.500	3.000	30.000	217.48	B 7-5/8" Reg	2.20	
3	9½" Float Sub	WEL Otway-2	9.500	3.000		217.48	B 7-5/8" Reg	1.99	
4	2 x 9¾" Spiral Drill collars	Rig	10.000	3.000		243.57	B 7-5/8" Reg	19.05	
5	29¾" String Stabilizer	9517-30	9.500	2.800	29.750	220.58	B 7-5/8" Reg	2.88	25.10
6	1x 9¾" Spiral Drill collar	Rig	10.000	3.000		243.57	B 7-5/8" Reg	9.53	
7	Cross Over Sub	WEL Otway-3	9.500	3.000		217.48	B 6-5/8" Reg	1.36	
8	3x 8¼" Spiral Drill collar	Rig	8.250	3.000		158.09	B 6-5/8" Reg	26.83	
9	Cross Over Sub	WEL Otway-6	8.000	2.800		150.32	B 5-1/2" FH	1.38	
10	3x 5½" HWDP		5.500	3.800		42.32	B 5-1/2" FH	29.19	
								94.83	

Parameter	Min	Max	Ave
WOB (klbs) :	4	4	4
RPM (rpm) :	80	80	80
Flow (gpm) :	1100	1100	1100
SPP (psi) :	1250	1250	1250

Activity	Hrs
Drilling :	6.00
Reaming :	0.00
Circ-Other :	0.50
Total :	6.50

BHA Weight (lb)
in Air (Total) : 48629
in Mud (Total) : 41639
in Air (Bel Jars) : 0
in Mud (Bel Jars) : 0

Drill String	OD(in)	Len (m)

PERFORMANCE

	In	Out
Inclination (deg)	0.00	0.37
Azimuth (deg)	0.00	43.55

	Distance (m)	ROP (m/hr)	Build (°/30m)	Turn (°/30m)	DLS (°/30m)
Oriented :	1.00	0			
Rotated :	67.00	11			
Total :	68.00	11	0.17	0.00	0.17

COMMENTS

Customer : Woodside Energy Ltd

Well : Thylacine South 1

Field : Thylacine

Lease : Thylacine

Rig : Maersk Guardian

Job # : AU-DD-0003930656

BHA# 1

OBJECTIVES:

Spud well and drill vertically to 240m MD.

RESULTS:

The 30" section was drilled vertically from 150m to 218m with no problems.

sperry-sun

DRILLING SERVICES

BHA Report

Customer : Woodside Energy Ltd

Well : Thylacine South 1

Field : Thylacine

Lease : Thylacine

Rig : Maersk Guardian

Job # : AU-DD-0003930656

BHA# 2

BHA# 2 : Date In :20/03/200 MD In (m) : 218 TVD In (m) : 218 Date Out 22/03/2006 MD Out (m): 638 TVD Out (m): 637

BIT DATA

Bit #	OD (in)	MFR	Style	Serial#	Nozzles (/32's)	TFA (in ²)	Dull Condition
2	23.000	Varel	ETR 1G	218184	2x22, 1x18, 1x16	1.187	1-1-BU-A -E-I-WT-TD

MOTOR DATA

Run #	OD (in)	MFR	Model	Serial#	Bend	Nzl (/32's)	Avg Dif (psi)	Cum Circ Hrs
1	9.625	SSDS	SperryDrill	963340	1.15°		107	23.50

COMPONENT DATA

Item #	Description	Serial #	OD (in)	ID (in)	Gauge (in)	Weight (lbs/ft)	Top Con	Length (m)	Bit - Center Blade (m)
1	23" Milled Tooth Bit	218184	23.000	3.000	23.000		P 7-5/8" Reg	0.54	
2	9-5/8" SperryDrill Lobe 6/7 - 5.0 stg PVX	963340	9.625	6.135	22.750	147.21	B 7-5/8" Reg	8.54	1.27
3	9 1/2" Float Sub (non-ported)	DA9093	9.500	3.000		217.48	B 7-5/8" Reg	0.75	
4	9-1/2" HOC w/ DM+ TM	10492794	9.500	2.000		230.86	B 7-5/8" Reg	9.54	
5	9 1/2" NM Drill collar	6438	9.500	3.000		217.00	B 7-5/8" Reg	8.92	
6	23" Integral Blade Stabilizer	GU2566	9.500	2.800	23.000	220.58	B 7-5/8" Reg	2.87	29.71
7	1x 9 3/4" Spiral Drill Collar		9.750	3.000		230.36	B 7-5/8" Reg	9.40	
8	WEL Tapered Cross Over Sub		9.500	3.000		217.48	B 6-5/8" Reg	1.36	
9	3 x 8 1/4" Spiral Drill collar		8.250	2.810		161.04	B 6-5/8" Reg	26.83	
10	8" Drilling Jar		8.000	2.800		150.32	B 6-5/8" Reg	10.09	
11	2 x 8 1/4" Spiral Drill collar		8.250	2.810		161.04	B 6-5/8" Reg	18.22	
12	WEL Tapered Cross Over Sub	Wel Otway 6	8.000	3.000		147.22	B 5-1/2" WT 5	1.38	
13	6 x 5 1/2" HWDP		5.500	3.350		50.93	B 5-1/2" WT 5	58.01	
								156.45	

Parameter	Min	Max	Ave
WOB (klbs) :	5	40	18
RPM (rpm) :	30	100	96
Flow (gpm) :	600	1160	1022
SPP (psi) :	640	2300	1724

Activity	Hrs
Drilling :	20.50
Reaming :	0.50
Circ-Other :	2.50
Total :	23.50

BHA Weight (lb)
in Air (Total) : 69992
in Mud (Total) : 60386
in Air (Bel Jars) : 45029
in Mud (Bel Jars) : 38850

Drill String	OD(in)	Len(m)
DP(S)-WT56-21.9#	5.500	482

PERFORMANCE

	In	Out
Inclination (deg)	0.37	4.61
Azimuth (deg)	43.55	175.68

	Distance(m)	ROP (m/hr)	Build (°/30m)	Turn (°/30m)	DLS (°/30m)
Oriented :	157.17	19			
Rotated :	262.83	21			
Total :	420.00	20	0.30	0.00	0.35

COMMENTS

Nudge to 5 degrees.

Customer : Woodside Energy Ltd**Well :** Thylacine South 1**Field :** Thylacine**Lease :** Thylacine**Rig :** Maersk Guardian**Job # :** AU-DD-0003930656**BHA# 2****OBJECTIVES:**

From the 26" conductor shoe, nudge the well to 3° inclination on 180° azimuth, hold for approximately 300m, then continue to build to 5° just prior to TD.

The initial nudge is to establish top hole separation from the remaining slots, and the second build is to provide a reference for Geopilot in the 12¼" section.

RESULTS:

The 23" section was drilled in one run from 218m to 638m in 15.2 drilling hours, at an average ROP of 42m/hr. Of the total 420m drilled, 139m (33%) was drilled in sliding mode.

After drilling out the shoe, the assembly was orientated on lowside for the first three stands, building to 3° inclination on 180° azimuth. In rotary mode, the assembly initially dropped, then built from 400m and dropped again over the last two stands. Occasional slides were required to maintain 3° inclination. Just prior to TD was build to 5° inclination.

Guar sweeps were pumped mid stand and gel sweeps on stand down for hole cleaning. Drilled to 638m and POOH to run 18 5/8" casing. On surface the bit was partially balled up, and the motor sleeve completely balled.

RECOMMENDATIONS:

No changes required

sperry-sun

DRILLING SERVICES

BHA Report

Customer : Woodside Energy Ltd

Well : Thylacine South 1

Field : Thylacine

Lease : Thylacine

Rig : Maersk Guardian

Job # : AU-DD-0003930656

BHA# 3

BHA# 3 : Date In :26/03/200 MD In (m) : 638 TVD In (m) : 637 Date Out 4/04/2006 MD Out (m): 3134 TVD Out (m): 2474

BIT DATA

Bit #	OD (in)	MFR	Style	Serial#	Nozzles (/32's)	TFA (in ²)	Dull Condition
3	12.250	Security DBS	FMF3563Z	10795300	6x20, 1x21	2.179	3-8-RO-S -X-I-HC-PR

MOTOR DATA

Run #	OD (in)	MFR	Model	Serial#	Bend	Nzl (/32's)	Avg Dif (psi)	Cum Circ Hrs

COMPONENT DATA

Item #	Description	Serial #	OD (in)	ID (in)	Gauge (in)	Weight (lbs/ft)	Top Con	Length (m)	Bit - Center Blade (m)
1	PDC: Security FM3563Z	10795300	12.250	2.813	12.250	380.48	B 6-5/8" Reg	0.63	6.73
2	Geopilot 9600 Series w/ GABI	1225TL034	9.625	3.500		215.18	B 7-5/8" Reg	5.80	
3	12 1/16" Non Mag Stabiliser (Geopilot)	BHA3	9.625	3.500	12.063	215.18	B 6-5/8" Reg	0.81	
4	8" NM Flex Drill Collar & DM	CP1015763	8.000	3.500		138.52	B 6-5/8" Reg	2.81	
5	8" RLL w/DGR + EWR	DM90099929	8.000	1.920		161.44	B 6-5/8" Reg	5.75	
6	8" ALD + CTN + ACAL	DM90099930	8.000	1.920	11.938	161.44	B 6-5/8" Reg	11.53	
7	8" PWD + HCIM	NZHW8	8.000	1.920		161.44	B 6-5/8" Reg	4.12	
8	8" Hangoff Collar w/P4M pulser	10718048	8.000	1.920		161.44	B 6-5/8" Reg	3.11	
9	8" BAT Sonic	DM90092876	8.000	1.920		161.44	B 6-5/8" Reg	6.91	
10	8 1/2" Float Sub (ported)	A609	8.060	3.000		149.79	B 6-5/8" Reg	0.77	
11	4 x 8 1/4" Spiral Drill collars	Rig	8.250	2.810		161.04	B 6-5/8" Reg	35.79	
12	8" Drilling Jar	1151D	8.000	2.750		151.06	B 6-5/8" Reg	10.09	
13	2 x 8 1/4" Spiral Drill collars	Rig	8.250	2.810		161.04	B 6-5/8" Reg	18.22	
14	WEL Tapered Cross Over Sub	WEL Otway 6	8.000	2.800		150.32	B 5-1/2" FH	1.34	
15	6 x 5 1/2" HWDP		5.500	3.375		57.00	B 5-1/2" FH	57.62	
								165.30	

Parameter	Min	Max	Ave
WOB (klbs) :	5	40	21
RPM (rpm) :	80	180	156
Flow (gpm) :	980	1150	1034
SPP (psi) :	2100	4100	3106

Activity	Hrs
Drilling :	135.50
Reaming :	0.00
Circ-Other :	16.50
Total :	152.00

BHA Weight	(lb)
in Air (Total) :	68723
in Mud (Total) :	57807
in Air (Bel Jars) :	42660
in Mud (Bel Jars) :	35884

Drill String	OD(in)	Len(m)
DP(S)-WT56-21.9#	5.500	2969

PERFORMANCE

	In	Out
Inclination (deg)	4.61	29.39
Azimuth (deg)	175.68	130.91

	Distance(m)	ROP (m/hr)	Build (°/30m)	Turn (°/30m)	DLS (°/30m)
Oriented :	0.00	0			3.00
Rotated :	2496.00	18	-0.20	-0.50	
Total :	2496.00	18	0.30	-0.54	0.32

COMMENTS

OBJECTIVES:

From the 18 5/8" shoe, turn on to 146° azimuth and build at 3°/30m, to reach the tangent angle of 47° by 1060m. Hold inclination and azimuth to 2788m, then drop at 2.5°/30m to pass through the primary and secondary targets at 41°. Once through the lower target, continue to drop at 2.5°/30m to 30° inclination, and hold to TD at approximately 3394m.

RESULTS:

The geopilot was picked up but problems with a HCIM PWD tool in the confidence test required it to be changed out. Once changed out, the BHA was downloaded and RIH. A shallow pulse test was good and a trial downlink attempted. While the geospan unit worked correctly the low flow and seawater did not allow the required pulse amplitude to be detected by the GP tool to confirm a successful downlink. The BHA was RIH to 600m MDRT and the GP bearings were run in however the casing was 18 3/8" OD making the ID 17.65" and the antirotating housing may have only just managed to grip the low side of the hole with around 4° inclination.

All that done the system was made ready to displace to the synthetic based mud system. The hole had been previously displaced to seawater and a gel pill spotted on bottom. The synthetic mud was pumped at 300gpm until it and the interface had passed the geopilot and was back up past the BHA in the annulus. The seals were broken in again. Having reached this point the flow rate was gradually increased to 950gpm to circulate the new mud around the hole. Drilling off the cement then commenced with 600gpm and 30-60rpm. Having drilled out of the cement and shoe and then circulated, a LOT was carried out and drilling commenced in the 17 1/2" hole section.

The 3°/30m build rate was achieved with 50% to 75% deflection. Moderate ROP of 75 - 115 m/hr achieved through Marls and Claystones. Upon intersection of the Massacre at approximately 1516mTVD the ROP diminished to 1-2m/hr. Due to intermittent intervals of interbedded stringers of 60% Siderite and Pyrite formations. In the tangent section the drop rate was very slight, however in the final stages of the hole the drop rate increased from 0.5 to 1°/30m and the hole turned to the left. This was after the ABI failed and we were in home position. At 2607m we stopped getting response from the ABI. We attempted to set the tool manually but the tool was unable to get a high side from the ABI. From 2607m to 3137m TD the inclination dropped 15° and the hole walked 16° to the left.

The ROP dropped off at 3130m to 2m/hr. When the PDC bit was pulled and retrieved at surface, inspection displayed characteristics of ring out, broken teeth, and heat checking. The 3°/30m build rate was achieved with 50% to 75% deflection.

sperry-sun

DRILLING SERVICES

BHA Report

Customer : Woodside Energy Ltd

Well : Thylacine South 1

Field : Thylacine

Lease : Thylacine

Rig : Maersk Guardian

Job # : AU-DD-0003930656

BHA# 4

BHA# 4 : Date In :4/04/2006 MD In (m) : 3134 TVD In (m) : 2474 Date Out 6/04/2006 MD Out (m): 3245 TVD Out (m): 2571

BIT DATA

Bit #	OD (in)	MFR	Style	Serial#	Nozzles (/32's)	TFA (in ²)	Dull Condition
4	12.250	Hycalog	RSX516S-A1	210541	7x18	1.740	2-1-CT-C -X-I-N -DSF

MOTOR DATA

Run #	OD (in)	MFR	Model	Serial#	Bend	Nzl (/32's)	Avg Dif (psi)	Cum Circ Hrs

COMPONENT DATA

Item #	Description	Serial #	OD (in)	ID (in)	Gauge (in)	Weight (lbs/ft)	Top Con	Length (m)	Bit - Center Blade (m)
1	PDC: Reed Hycalog RSX516S-A10	210541	12.250	2.813	12.250	380.48	B 6-5/8" Reg	0.52	6.62
2	Geopilot 9600 Series w/ GABI	1225TL026	9.625	3.500		215.18	B 7-5/8" Reg	5.80	
3	12 1/16" Non Mag Stabiliser (Geopilot)	BHA3	9.625	3.500	12.063	215.18	B 6-5/8" Reg	0.81	
4	8" NM Flex Drill Collar & DM	CP719940	8.000	3.500		138.52	B 6-5/8" Reg	2.81	
5	8" RLL w/DGR + EWR	DM90099929	8.000	1.920		161.44	B 6-5/8" Reg	5.75	
6	8" ALD + CTN + ACAL	DM90099930	8.000	1.920	11.938	161.44	B 6-5/8" Reg	11.53	
7	8" PWD + HCIM	NZHW8	8.000	1.920		161.44	B 6-5/8" Reg	4.12	
8	8" Hangoff Collar w/P4M pulser	10718048	8.000	1.920		161.44	B 6-5/8" Reg	3.11	
9	8" BAT Sonic	DM90092868	8.000	1.920		161.44	B 6-5/8" Reg	6.85	
10	8 1/2" Float Sub (ported)	A609	8.060	3.000		149.79	B 6-5/8" Reg	0.77	
11	4 x 8 1/4" Spiral Drill collars	Rig	8.250	2.810		161.04	B 6-5/8" Reg	35.79	
12	8" Drilling Jar	MHA00204	8.250	2.750		161.94	B 6-5/8" Reg	9.68	
13	2 x 8 1/4" Spiral Drill collars	Rig	8.250	2.810		161.04	B 6-5/8" Reg	18.22	
14	WEL Tapered Cross Over Sub	WEL Otway 6	8.000	2.800		150.32	B 5-1/2" FH	1.34	
15	6 x 5 1/2" HWDP		5.500	3.375		57.00	B 5-1/2" FH	57.62	
								164.72	

Parameter	Min	Max	Ave
WOB (klbs) :	25	45	31
RPM (rpm) :	110	150	136
Flow (gpm) :	985	985	985
SPP (psi) :	3450	3725	3604

Activity	Hrs
Drilling :	8.50
Reaming :	0.00
Circ-Other :	3.50
Total :	12.00

BHA Weight (lb)
in Air (Total) : 68697
in Mud (Total) : 57785
in Air (Bel Jars) : 42491
in Mud (Bel Jars) : 35742

Drill String	OD(in)	Len(m)
DP(S)-WT56-21.9#	5.500	3080

PERFORMANCE

	In	Out
Inclination (deg)	29.39	29.73
Azimuth (deg)	130.91	158.59

	Distance(m)	ROP (m/hr)	Build (°/30m)	Turn (°/30m)	DLS (°/30m)
Oriented :	0.00	0			
Rotated :	111.00	13			
Total :	111.00	13	0.09	7.48	3.66

COMMENTS

Customer : Woodside Energy Ltd

Well : Thylacine South 1

Field : Thylacine

Lease : Thylacine

Rig : Maersk Guardian

Job # : AU-DD-0003930656

BHA# 4

OBJECTIVES:

To continue to drill to a TVD of 2645m, turning the well to an azimuth of 170°. This is for exploration to evaluate future wells .

RESULTS:

Ran in hole with Geopilot and Hycalog bit to 2764m. Broke in seals on Geopilot starting at 5rpm working up to 60rpm. Washed down to bottom slowly while logging with MWD. Broke in bit and started to drill with 80% deflection and 80R toolface. The assembly continued to drop and the toolface was brought around to 25R before it stopped. There appeared to be more undercutting from this bit and not as much build . This could have been due to the double set of cutters on the shoulder and gauge. The gauge length was also 1.5" shorter than the Security bit.

The hole was drilled to 3245m until encountering a 700 psi loss. Surface equipment passed inspection then assembly was pulled back wet to investigate suspect washed drillstring or BHA component. Top single of stand 52 ID due to wash. Woodside elected to suspend drilling operations. Continue POOH to perform cement plug and abandon operations.



Job # : AU-DD-0003930656

Hole Size (in) :

Casing ID (in) :

SSDS Reps : Andrew Pritchett (1), Tim Gallagher (1)

150.00	0.00	0.00	150.00	3.45	\$10.01W
--------	------	------	--------	------	----------

Port Campbell Lst	150.00	150.00
-------------------	--------	--------

Gel/Seawater	1.06	125	20	55.0	15.0 / 35.0		9.0	4.00		
--------------	------	-----	----	------	-------------	--	-----	------	--	--

00:00	00:00	24.00	150.00		Preparing rig for spud
-------	-------	-------	--------	--	------------------------

2 Directional Drillers on location



Job # : AU-DD-0003930656

Hole Size (in) :

Casing ID (in) :

SSDS Reps : Andrew Pritchett (2), Tim Gallagher (2)

150.00	0.00	0.00	150.00	3.45	\$10.01W
--------	------	------	--------	------	----------

Port Campbell Lst	150.00	150.00
-------------------	--------	--------

Gel/Seawater	1.06	125	20	55.0	15.0 / 35.0		9.0	4.00		
--------------	------	-----	----	------	-------------	--	-----	------	--	--

00:00	00:00	24.00	150.00		Preparing rig for spud
-------	-------	-------	--------	--	------------------------

COMMENTS

sperry-sun

DRILLING SERVICES

Daily Drilling Report

Customer : Woodside Energy Ltd
 Well : Thylacine South 1
 Field : Thylacine
 Lease : Thylacine
 Rig : Maersk Guardian
 Job # : AU-DD-0003930656

CURRENT STATUS Report # 3 17/03/2006

Total Depth (m) :	190	Casing Depth (m) :	217.00	Operator Reps :	Stuart Job, Luke Morris
Drilled last 24 hrs (m) :	40	Casing Diameter (in) :	26.000	SSDS Reps :	Andrew Pritchett (3), Tim Gallagher (3)
Hole Size (in) :	17.500	Casing ID (in) :			

LAST SURVEY

Depth (m)	Inclination	Azimuth	TVD (m)	Displ (m)	Direction
150.00	0.00	0.00	150.00	3.45	S10.01W

LAST FORMATION TOP

Formation Name	MD Top (m)	TVD Top (m)
Port Campbell Lst	150.00	150.00

BHA SUMMARY

BHA 1: 94.83 m; Bit #1 (4. hrs), Other, Sub, 2 x DC, Stab, 1x DC, Sub, 3x DC, Sub, 3x HWDP

MUD DATA

Type	Weight (sg)	FV (sec)	PV (cp)	YP (lbf/100ft ²)	Gels	Fluid Loss	pH	Solids (%)	Sand (%)	Oil (%)
Gel/Seawater	1.06	125	20	55.0	15.0 / 35.0		9.0	4.00		

TIME BREAKDOWN

From	To	Hours	TMD (m)	BHA #	Activity
00:00	12:00	12.00	150.00		Prepare rig for spud and pressure test surface lines
12:00	13:30	1.50	150.00		Continue to pressure test surface lines
13:30	18:30	5.00	150.00		M/up 30" hole opener BHA and RIH to 94.8m
18:30	19:30	1.00	150.00	1	Continue RIH and stab into jacket guides at 102m and 125m
19:30	20:00	0.50	150.00	1	Continue RIH to seabed at 150m. Establish drilling parameters
20:00	00:00	4.00	190.00	1	Drill 30" hole 150-190m

COMMENTS

sperry-sun

DRILLING SERVICES

Daily Drilling Report

Customer : Woodside Energy Ltd

Well : Thylacine South 1

Field : Thylacine

Lease : Thylacine

Rig : Maersk Guardian

Job # : AU-DD-0003930656

CURRENT STATUS Report # 4 18/03/2006

Total Depth (m) : 218
Drilled last 24 hrs (m) : 28
Hole Size (in) : 17.500

Casing Depth (m) : 217.00
Casing Diameter (in) : 26.000
Casing ID (in) : 24.000

Operator Reps : Stuart Job, Shaun Corless
SSDS Reps : Andrew Pritchett (4), Tim Gallagher (4)

LAST SURVEY

Depth (m)	Inclination	Azimuth	TVD (m)	Displ (m)	Direction
150.00	0.00	0.00	150.00	3.45	S10.01W

LAST FORMATION TOP

Formation Name	MD Top (m)	TVD Top (m)
Port Campbell Lst	150.00	150.00

BHA SUMMARY

BHA 1: 94.83 m; Bit #1 (6. hrs), Other, Sub, 2 x DC, Stab, 1x DC, Sub, 3x DC, Sub, 3x HWDP

MUD DATA

Type	Weight (sg)	FV (sec)	PV (cp)	YP (lbf/100ft ²)	Gels	Fluid Loss	pH	Solids (%)	Sand (%)	Oil (%)
Gel/Seawater	1.06	125	20	55.0	15.0 / 35.0		9.0	4.00		

TIME BREAKDOWN

From	To	Hours	TMD (m)	BHA #	Activity
00:00	02:00	2.00	218.00	1	Continue to drill 30" hole 190-218m
02:00	02:30	0.50	218.00	1	Pump 400 bbl hi-vis gel and displace with seawater
02:30	05:00	2.50	218.00	1	POOH 218-30m
05:00	06:00	1.00	218.00	1	Cont. commissioning work on PRS & pipe handler
06:00	07:30	1.50	218.00	1	Cont. POOH to surface. Lay out str. stab & rack remaining std. in derrick
07:30	18:30	11.00	218.00		Rig up and run 26" conductor
18:30	19:00	0.50	218.00		Lay out conductor running tool
19:00	00:00	5.00	218.00		Rig up for cement job

COMMENTS

sperry-sun

DRILLING SERVICES

Daily Drilling Report

Customer : Woodside Energy Ltd

Well : Thylacine South 1

Field : Thylacine

Lease : Thylacine

Rig : Maersk Guardian

Job # : AU-DD-0003930656

CURRENT STATUS Report # 6 20/03/2006

Total Depth	(m) :	218	Casing Depth	(m) :	217.00	Operator Reps	: Stuart Job, Shaun Corless
Drilled last 24 hrs	(m) :	0	Casing Diameter	(in) :	26.000	SSDS Reps	: Tim Gallagher (6), Mike Hackett (1)
Hole Size	(in) :	23.000	Casing ID	(in) :	24.000		

LAST SURVEY

Depth (m)	Inclination	Azimuth	TVD (m)	Displ (m)	Direction
150.00	0.00	0.00	150.00	3.45	S10.01W

LAST FORMATION TOP

Formation Name	MD Top (m)	TVD Top (m)
Port Campbell Lst	150.00	150.00

BHA SUMMARY

BHA 2: 156.45 m; Bit #2 (0.5 hrs), PDM #1 (0.5 hrs), Sub, MWD, DC, Stab, 1x DC, Sub, 3 x DC, Jar, 2 x DC, Sub, 6 x HWDP

MUD DATA

Type	Weight (sg)	FV (sec)	PV (cp)	YP (lbf/100ft ²)	Gels	Fluid Loss	pH	Solids (%)	Sand (%)	Oil (%)
Gel/Seawater	1.06	125	20	55.0	15.0 / 35.0		9.0	4.00		

TIME BREAKDOWN

From	To	Hours	TMD (m)	BHA #	Activity
00:00	02:30	2.50	218.00		Continu to install & function diverter system
02:30	13:30	11.00	218.00		Observe leak on riser joint coupling. Pull diverter & repair seals
13:30	15:30	2.00	218.00		Install and test diverter system
15:30	17:00	1.50	218.00		Pick up 5½" DP
17:00	23:00	6.00	218.00	2	M/up 23" BHA and RIH to 155m
23:00	23:30	0.50	218.00	2	Continue RIH to 185m
23:30	00:00	0.50	218.00	2	Wash/ream from 185-214m

COMMENTS

sperry-sun

DRILLING SERVICES

Daily Drilling Report

Customer : Woodside Energy Ltd

Well : Thylacine South 1

Field : Thylacine

Lease : Thylacine

Rig : Maersk Guardian

Job # : AU-DD-0003930656

CURRENT STATUS Report # 7 21/03/2006

Total Depth	(m)	:	638	Casing Depth	(m)	:	633.40	Operator Reps	:	Stuart Job, Shaun Corless
Drilled last 24 hrs	(m)	:	420	Casing Diameter	(in)	:	18.625	SSDS Reps	:	Tim Gallagher (7), Mike Hackett (2)
Hole Size	(in)	:	23.000	Casing ID	(in)	:	17.755			

LAST SURVEY

Depth (m)	Inclination	Azimuth	TVD (m)	Displ (m)	Direction
602.04	3.46	176.60	601.53	21.33	S03.41E

LAST FORMATION TOP

Formation Name	MD Top (m)	TVD Top (m)
Mid Miocene	485.00	484.64

BHA SUMMARY

BHA 2: 156.45 m; Bit #2 (22.5 hrs), PDM #1 (23.5 hrs), Sub, MWD, DC, Stab, 1x DC, Sub, 3 x DC, Jar, 2 x DC, Sub, 6 x HWDP

MUD DATA

Type	Weight (sg)	FV (sec)	PV (cp)	YP (lbf/100ft ²)	Gels	Fluid Loss	pH	Solids (%)	Sand (%)	Oil (%)
Gel/Seawater	1.06	125	20	55.0	15.0 / 35.0		9.0	4.00		

TIME BREAKDOWN

From	To	Hours	TMD (m)	BHA #	Activity
00:00	01:30	1.50	218.00	2	Tag cement and drill out cement & shoe to 218m
01:30	22:00	20.50	638.00	2	Drill 23" hole 218 - 638m
22:00	23:00	1.00	638.00	2	Pump sweep and spot pills as per program
23:00	00:00	1.00	638.00	2	Flowcheck and POOH 638 - 540m

COMMENTS

sperry-sun

DRILLING SERVICES

Daily Drilling Report

Customer : Woodside Energy Ltd

Well : Thylacine South 1

Field : Thylacine

Lease : Thylacine

Rig : Maersk Guardian

Job # : AU-DD-0003930656

CURRENT STATUS Report # 8 22/03/2006

Total Depth	(m)	:	638	Casing Depth	(m)	:	633.40	Operator Reps	:	Stuart Job, Shaun Corless
Drilled last 24 hrs	(m)	:	0	Casing Diameter	(in)	:	18.625	SSDS Reps	:	Tim Gallagher (8), Mike Hackett (3)
Hole Size	(in)	:	23.000	Casing ID	(in)	:	17.755			

LAST SURVEY

Depth (m)	Inclination	Azimuth	TVD (m)	Displ (m)	Direction
602.04	3.46	176.60	601.53	21.33	S03.41E

LAST FORMATION TOP

Formation Name	MD Top (m)	TVD Top (m)
Mid Miocene	485.00	484.64

BHA SUMMARY

BHA 2: 156.45 m; Bit #2 (22.5 hrs), PDM #1 (23.5 hrs), Sub, MWD, DC, Stab, 1x DC, Sub, 3 x DC, Jar, 2 x DC, Sub, 6 x HWDP

MUD DATA

Type	Weight (sg)	FV (sec)	PV (cp)	YP (lbf/100ft ²)	Gels	Fluid Loss	pH	Solids (%)	Sand (%)	Oil (%)
Gel/Seawater	1.06	125	20	55.0	15.0 / 35.0		9.0	4.00		

TIME BREAKDOWN

From	To	Hours	TMD (m)	BHA #	Activity
00:00	04:15	4.25	638.00	2	Continue to trip out 540m to surface.
04:15	04:30	0.25	638.00	2	Clean off bit and rack BHA in derrick
04:30	08:30	4.00	638.00	2	Attempt to retrieve wear bushing-no go. Establish rotation - tool came free
08:30	12:00	3.50	638.00	2	Drain riser and rig down diverter system to allow inspection of wellhead
12:00	14:00	2.00	638.00	2	Cont. to retrieve L.P. riser and inspect wellhead
14:00	00:00	10.00	638.00		Rig up and run 18 5/8" casing

COMMENTS

sperry-sun

DRILLING SERVICES

Daily Drilling Report

Customer : Woodside Energy Ltd

Well : Thylacine South 1

Field : Thylacine

Lease : Thylacine

Rig : Maersk Guardian

Job # : AU-DD-0003930656

CURRENT STATUS Report # 9 23/03/2006

Total Depth (m) : 638

Drilled last 24 hrs (m) : 0

Hole Size (in) :

Casing Depth (m) : 633.40

Casing Diameter (in) : 18.625

Casing ID (in) : 17.755

Operator Reps : Stuart Job, Shaun Corless

SSDS Reps : Tim Gallagher (9), Mike Hackett (4)

LAST SURVEY

Depth (m)	Inclination	Azimuth	TVD (m)	Displ (m)	Direction
602.04	3.46	176.60	601.53	21.33	S03.41E

LAST FORMATION TOP

Formation Name	MD Top (m)	TVD Top (m)
Mid Miocene	485.00	484.64

BHA SUMMARY

MUD DATA

Type	Weight (sg)	FV (sec)	PV (cp)	YP (lbf/100ft ²)	Gels	Fluid Loss	pH	Solids (%)	Sand (%)	Oil (%)
Gel/Seawater	1.06	125	20	55.0	15.0 / 35.0		9.0	4.00		

TIME BREAKDOWN

From	To	Hours	TMD (m)	BHA #	Activity
00:00	00:00	24.00	638.00		Continue to run and cement 18 5/8" casing

COMMENTS

sperry-sun

DRILLING SERVICES

Daily Drilling Report

Customer : Woodside Energy Ltd

Well : Thylacine South 1

Field : Thylacine

Lease : Thylacine

Rig : Maersk Guardian

Job # : AU-DD-0003930656

CURRENT STATUS Report # 10 24/03/2006

Total Depth (m) :	638	Casing Depth (m) :	633.40	Operator Reps :	Stuart Job, Shaun Corless
Drilled last 24 hrs (m) :	0	Casing Diameter (in) :	18.625	SSDS Reps :	Tim Gallagher (10), Mike Hackett (5)
Hole Size (in) :		Casing ID (in) :	17.755		

LAST SURVEY

Depth (m)	Inclination	Azimuth	TVD (m)	Displ (m)	Direction
602.04	3.46	176.60	601.53	21.33	S03.41E

LAST FORMATION TOP

Formation Name	MD Top (m)	TVD Top (m)
Mid Miocene	485.00	484.64

BHA SUMMARY

MUD DATA

Type	Weight (sg)	FV (sec)	PV (cp)	YP (lbf/100ft ²)	Gels	Fluid Loss	pH	Solids (%)	Sand (%)	Oil (%)
Gel/Seawater	1.06	125	20	55.0	15.0 / 35.0		9.0	4.00		

TIME BREAKDOWN

From	To	Hours	TMD (m)	BHA #	Activity
00:00	01:30	1.50	638.00		POOH with cement stinger. L/out centraliser & tag-in-adapter
01:30	07:30	6.00	638.00		Install wellhead and pressure test seals
07:30	08:30	1.00	638.00		Confirm measurement f/RKB to datum. Install covers
08:30	09:30	1.00	638.00		Lay out cement stand
09:30	10:00	0.50	638.00		Clear rig floor
10:00	13:30	3.50	638.00		Rig up and run HP riser
13:30	00:00	10.50	638.00		Nipple Up BOP

COMMENTS

Daily Drilling Report

Customer : Woodside Energy Ltd

Well : Thylacine South 1

Field : Thylacine

Lease : Thylacine

Rig : Maersk Guardian

Job # : AU-DD-0003930656

CURRENT STATUS Report # 11 25/03/2006

Total Depth (m) : 638

Drilled last 24 hrs (m) : 0

Hole Size (in) :

Casing Depth (m) : 633.40

Casing Diameter (in) : 18.625

Casing ID (in) : 17.755

Operator Reps : Stuart Job, Shaun Corless

SSDS Reps : Tim Gallagher (11), Mike Hackett (6)

LAST SURVEY

Depth (m)	Inclination	Azimuth	TVD (m)	Displ (m)	Direction
602.04	3.46	176.60	601.53	21.33	S03.41E

LAST FORMATION TOP

Formation Name	MD Top (m)	TVD Top (m)
Mid Miocene	485.00	484.64

BHA SUMMARY

MUD DATA

Type	Weight (sg)	FV (sec)	PV (cp)	YP (lbf/100ft ²)	Gels	Fluid Loss	pH	Solids (%)	Sand (%)	Oil (%)
Gel/Seawater	1.06	125	20	55.0	15.0 / 35.0		9.0	4.00		

TIME BREAKDOWN

From	To	Hours	TMD (m)	BHA #	Activity
00:00	06:00	6.00	638.00		Test BOP and casing
06:00	09:00	3.00	638.00		Continue to pressure test casing while p/u 5½" DP
09:00	17:30	8.50	638.00		Continue to p/u 5½" DP
17:30	23:30	6.00	638.00		Install and leak test LP riser
23:30	00:00	0.50	638.00		Continue to p/u 5½" DP

COMMENTS

sperry-sun

DRILLING SERVICES

Daily Drilling Report

Customer : Woodside Energy Ltd

Well : Thylacine South 1

Field : Thylacine

Lease : Thylacine

Rig : Maersk Guardian

Job # : AU-DD-0003930656

CURRENT STATUS Report # 12 26/03/2006

Total Depth (m) :	638	Casing Depth (m) :	633.40	Operator Reps :	Stuart Job, Shaun Corless
Drilled last 24 hrs (m) :	0	Casing Diameter (in) :	18.625	SSDS Reps :	Tim Gallagher (12), Mike Hackett (7)
Hole Size (in) :	12.250	Casing ID (in) :	17.755		

LAST SURVEY

Depth (m)	Inclination	Azimuth	TVD (m)	Displ (m)	Direction
602.04	3.46	176.60	601.53	21.33	S03.41E

LAST FORMATION TOP

Formation Name	MD Top (m)	TVD Top (m)
Mid Miocene	485.00	484.64

BHA SUMMARY

BHA 3: 165.30 m; Bit #3 (1.5 hrs), MWD, Stab, Flex, MWD, MWD, MWD, MWD, MWD, Sub, 4 x DC, Jar, 2 x DC, Sub, 6 x HWDP

MUD DATA

Type	Weight (sg)	FV (sec)	PV (cp)	YP (lbf/100ft ²)	Gels	Fluid Loss	pH	Solids (%)	Sand (%)	Oil (%)
Gel/Seawater	1.06	125	20	55.0	15.0 / 35.0		9.0	4.00		

TIME BREAKDOWN

From	To	Hours	TMD (m)	BHA #	Activity
00:00	07:30	7.50	638.00		Continue to pick up 5½" DP
07:30	11:00	3.50	638.00		Leak between LP riser & BOP. Tighten connection & cont. prepare for SBM
11:00	21:00	10.00	638.00		Continue to pick up 5½" DP
21:00	22:30	1.50	638.00		Pressure test surface lines and BOP
22:30	00:00	1.50	638.00	3	M/up 12¼" Geopilot BHA

COMMENTS

sperry-sun

DRILLING SERVICES

Daily Drilling Report

Customer : Woodside Energy Ltd

Well : Thylacine South 1

Field : Thylacine

Lease : Thylacine

Rig : Maersk Guardian

Job # : AU-DD-0003930656

CURRENT STATUS Report # 13 27/03/2006

Total Depth (m) :	638	Casing Depth (m) :	633.40	Operator Reps :	Stuart Job, Shaun Corless
Drilled last 24 hrs (m) :	0	Casing Diameter (in) :	18.625	SSDS Reps :	Tim Gallagher (13), Mike Hackett (8)
Hole Size (in) :	12.250	Casing ID (in) :	17.755		

LAST SURVEY

Depth (m)	Inclination	Azimuth	TVD (m)	Displ (m)	Direction
602.04	3.46	176.60	601.53	21.33	S03.41E

LAST FORMATION TOP

Formation Name	MD Top (m)	TVD Top (m)
Mid Miocene	485.00	484.64

BHA SUMMARY

BHA 3: 165.30 m; Bit #3 (1.5 hrs), MWD, Stab, Flex, MWD, MWD, MWD, MWD, MWD, Sub, 4 x DC, Jar, 2 x DC, Sub, 6 x HWDP

MUD DATA

Type	Weight (sg)	FV (sec)	PV (cp)	YP (lb/100ft ²)	Gels	Fluid Loss	pH	Solids (%)	Sand (%)	Oil (%)
Gel/Seawater	1.06	125	20	55.0	15.0 / 35.0		9.0	4.00		

TIME BREAKDOWN

From	To	Hours	TMD (m)	BHA #	Activity
00:00	02:30	2.50	638.00	3	Continue to pick up 12¼" BHA
02:30	04:00	1.50	638.00	3	Attempt to initialise LWD-lost comms. Troubleshoot problem
04:00	05:30	1.50	638.00	3	Lay out BAT Sonic and nukes
05:30	08:30	3.00	638.00	3	Change out HCIM / PWD tool
08:30	10:00	1.50	638.00	3	Test tool - OK. Continue to upload LWD
10:00	10:30	0.50	638.00	3	Install sources in ALD / CTN
10:30	12:00	1.50	638.00	3	RIH to 136m
12:00	13:00	1.00	638.00	3	Shallow hole test LWD & Geopilot
13:00	17:00	4.00	638.00	3	Install diverter bag. RIH to 600m picking up DP
17:00	17:30	0.50	638.00	3	M/up top drive and lubricate Geopilot seals
17:30	21:00	3.50	638.00	3	Prepare for SBM displacement
21:00	22:00	1.00	638.00	3	Displace hole to SBM
22:00	00:00	2.00	638.00	3	Circulate and condition mud while tagging cement at 625m

COMMENTS

sperry-sun

DRILLING SERVICES

Daily Drilling Report

Customer : Woodside Energy Ltd

Well : Thylacine South 1

Field : Thylacine

Lease : Thylacine

Rig : Maersk Guardian

Job # : AU-DD-0003930656

CURRENT STATUS Report # 14 28/03/2006

Total Depth (m) :	1051	Casing Depth (m) :	633.40	Operator Reps :	Stuart Job, Shaun Corless
Drilled last 24 hrs (m) :	413	Casing Diameter (in) :	18.625	SSDS Reps :	Trevor Ziegler (1), Mike Hackett (9)
Hole Size (in) :	12.250	Casing ID (in) :	17.755		

LAST SURVEY

Depth (m)	Inclination	Azimuth	TVD (m)	Displ (m)	Direction
1050.29	46.85	148.81	1000.19	195.08	S29.02E

LAST FORMATION TOP

Formation Name	MD Top (m)	TVD Top (m)
Lower Gellibrand	806.00	800.85

BHA SUMMARY

BHA 3: 165.30 m; Bit #3 (21. hrs), MWD, Stab, Flex, MWD, MWD, MWD, MWD, MWD, Sub, 4 x DC, Jar, 2 x DC, Sub, 6 x HWDP

MUD DATA

Type	Weight (sg)	FV (sec)	PV (cp)	YP (lb/100ft ²)	Gels	Fluid Loss	pH	Solids (%)	Sand (%)	Oil (%)
Oil Base	1.25	93	34	28.0	17.0 / 23.0			12.30		58.00

TIME BREAKDOWN

From	To	Hours	TMD (m)	BHA #	Activity
00:00	01:30	1.50	638.00	3	Drill Cement & shoe track 625 - 638m
01:30	02:00	0.50	641.00	3	Drilling 12-1/4" 638-641m
02:00	02:30	0.50	641.00	3	Circulate/ confirm even mud weight
02:30	05:00	2.50	641.00	3	Pull pack to md 628/ rig-up for Leak-off Test.
05:00	12:00	7.00	742.00	3	Drilling 12-1/4" section 641- 742m
12:00	00:00	12.00	1051.00	3	Drilling 12-1/4" section 742 - 1051m

COMMENTS

Trevor Ziegler (DD) relieves Tim Gallagher (DD)

sperry-sun

DRILLING SERVICES

Daily Drilling Report

Customer : Woodside Energy Ltd

Well : Thylacine South 1

Field : Thylacine

Lease : Thylacine

Rig : Maersk Guardian

Job # : AU-DD-0003930656

CURRENT STATUS Report # 15 29/03/2006

Total Depth	(m)	:	1715	Casing Depth	(m)	:	633.40	Operator Reps	:	Stuart Job, Shaun Corless
Drilled last 24 hrs	(m)	:	664	Casing Diameter	(in)	:	18.625	SSDS Reps	:	Trevor Ziegler (2), Mike Hackett (10)
Hole Size	(in)	:	12.250	Casing ID	(in)	:	17.755			

LAST SURVEY

Depth (m)	Inclination	Azimuth	TVD (m)	Displ (m)	Direction
1713.55	47.55	148.35	1453.13	679.06	S31.83E

LAST FORMATION TOP

Formation Name	MD Top (m)	TVD Top (m)
Lower Massacre	1698.00	1442.63

BHA SUMMARY

BHA 3: 165.30 m; Bit #3 (43. hrs), MWD, Stab, Flex, MWD, MWD, MWD, MWD, MWD, Sub, 4 x DC, Jar, 2 x DC, Sub, 6 x HWDP

MUD DATA

Type	Weight (sg)	FV (sec)	PV (cp)	YP (lbf/100ft ²)	Gels	Fluid Loss	pH	Solids (%)	Sand (%)	Oil (%)
Oil Base	1.25	82	34	28.0	14.0 / 23.0			12.20		60.00

TIME BREAKDOWN

From	To	Hours	TMD (m)	BHA #	Activity
00:00	02:30	2.50	1140.00	3	Drilling 12-1/4" section 1059 - 1140m (700psi loss encountered).
02:30	03:30	1.00	1140.00	3	Trouble shoot/ establish Pump #3 source of loss/ Pump Repair.
03:30	07:30	4.00	1267.00	3	Drilling 12-1/4" section 1140 - 1267m (500 psi loss encountered).
07:30	08:30	1.00	1267.00	3	Circulate/ repair leaking swab pump #2.
08:30	12:00	3.50	1359.00	3	Drilling 12-14" section 1267 - 1359m.
12:00	00:00	12.00	1715.00	3	Drilling 12-14" section 1359 - 1715m.

COMMENTS

sperry-sun

DRILLING SERVICES

Daily Drilling Report

Customer : Woodside Energy Ltd

Well : Thylacine South 1

Field : Thylacine

Lease : Thylacine

Rig : Maersk Guardian

Job # : AU-DD-0003930656

CURRENT STATUS Report # 16 30/03/2006

Total Depth (m) :	2099	Casing Depth (m) :	633.40	Operator Reps :	Dwayne Rota, Shaun Corless
Drilled last 24 hrs (m) :	384	Casing Diameter (in) :	18.625	SSDS Reps :	Trevor Ziegler (3), Mike Hackett (11)
Hole Size (in) :	12.250	Casing ID (in) :	17.755		

LAST SURVEY

Depth (m)	Inclination	Azimuth	TVD (m)	Displ (m)	Direction
2087.90	47.47	146.74	1708.60	952.43	S32.55E

LAST FORMATION TOP

Formation Name	MD Top (m)	TVD Top (m)
Paaratte Formation	1800.00	1511.22

BHA SUMMARY

BHA 3: 165.30 m; Bit #3 (63. hrs), MWD, Stab, Flex, MWD, MWD, MWD, MWD, MWD, Sub, 4 x DC, Jar, 2 x DC, Sub, 6 x HWDP

MUD DATA

Type	Weight (sg)	FV (sec)	PV (cp)	YP (lbf/100ft ²)	Gels	Fluid Loss	pH	Solids (%)	Sand (%)	Oil (%)
Oil Base	1.25	82	35	24.0	15.0 / 25.0			12.20		60.00

TIME BREAKDOWN

From	To	Hours	TMD (m)	BHA #	Activity
00:00	03:30	3.50	1814.00	3	Drilling 12-1/4" section from 1715 - 1814m
03:30	04:00	0.50	1814.00	3	Pull-back to md 1808m/ Flow check OK
04:00	18:00	14.00	2026.00	3	Drilling 12-1/4" section from 1814m - 2026
18:00	21:30	3.50	2026.00	3	Circulate/ Rig repair / re-weld fatigue crack suction line
21:30	00:00	2.50	2099.00	3	Drilling 12-1/4" section from 2026 - 2099m

COMMENTS

Massacre formation encounters interbedded stringers displaying 50 - 60% Siderite/ pyrite formations.
Hard bands/ stringers deminished ROP to 1-2m/ hr.
Reduced RPM and WOB vigilance when attempt to drill through hard bands.
Service interruptions pump(s) & suction lines related.

sperry-sun

DRILLING SERVICES

Daily Drilling Report

Customer : Woodside Energy Ltd
 Well : Thylacine South 1
 Field : Thylacine
 Lease : Thylacine
 Rig : Maersk Guardian
 Job # : AU-DD-0003930656

CURRENT STATUS Report # 17 31/03/2006

Total Depth (m) :	2552	Casing Depth (m) :	633.40	Operator Reps :	Dwayne Rota, Shaun Corless
Drilled last 24 hrs (m) :	453	Casing Diameter (in) :	18.625	SSDS Reps :	Trevor Ziegler (4), Mike Hackett (12)
Hole Size (in) :	12.250	Casing ID (in) :	17.755		

LAST SURVEY

Depth (m)	Inclination	Azimuth	TVD (m)	Displ (m)	Direction
2551.84	46.64	145.01	2023.16	1293.13	S33.25E

LAST FORMATION TOP

Formation Name	MD Top (m)	TVD Top (m)
Top of Belfast	2158.00	1756.12

BHA SUMMARY

BHA 3: 165.30 m; Bit #3 (85. hrs), MWD, Stab, Flex, MWD, MWD, MWD, MWD, MWD, Sub, 4 x DC, Jar, 2 x DC, Sub, 6 x HWDP

MUD DATA

Type	Weight (sg)	FV (sec)	PV (cp)	YP (lbf/100ft ²)	Gels	Fluid Loss	pH	Solids (%)	Sand (%)	Oil (%)
Oil Base	1.25	82	35	24.0	15.0 / 25.0			12.20		60.00

TIME BREAKDOWN

From	To	Hours	TMD (m)	BHA #	Activity
00:00	12:00	12.00	2409.00	3	Drilling 12-1/4" section from 2099 - 2409m
12:00	20:00	8.00	2535.00	3	Drilling 12-1/4" section from 2409 - 2535m
20:00	22:00	2.00	2535.00	3	Circulate/ Pump repair/ Pump Blower mtr/ Pump #2 Oiler grd.
22:00	00:00	2.00	2552.00	3	Drilling 12-1/4" section from 2535 - 2552m

COMMENTS

Belfast formation displays mutilple interbeded stringers.
 Continually adjusting drilling parameters to limit vibration while maximing ROP.

sperry-sun

DRILLING SERVICES

Daily Drilling Report

Customer : Woodside Energy Ltd
 Well : Thylacine South 1
 Field : Thylacine
 Lease : Thylacine
 Rig : Maersk Guardian
 Job # : AU-DD-0003930656

CURRENT STATUS Report # 18 1/04/2006

Total Depth (m) :	2812	Casing Depth (m) :	633.40	Operator Reps :	Dwayne Rota, Shaun Corless
Drilled last 24 hrs (m) :	260	Casing Diameter (in) :	18.625	SSDS Reps :	Trevor Ziegler (5), Mike Hackett (13)
Hole Size (in) :	12.250	Casing ID (in) :	17.755		

LAST SURVEY

Depth (m)	Inclination	Azimuth	TVD (m)	Displ (m)	Direction
2783.34	40.08	139.75	2189.91	1453.22	S33.60E

LAST FORMATION TOP

Formation Name	MD Top (m)	TVD Top (m)
Unit-1 Thylacine Mbr	2804.00	2205.80

BHA SUMMARY

BHA 3: 165.30 m; Bit #3 (108. hrs), MWD, Stab, Flex, MWD, MWD, MWD, MWD, Sub, 4 x DC, Jar, 2 x DC, Sub, 6 x HWDP

MUD DATA

Type	Weight (sg)	FV (sec)	PV (cp)	YP (lb/100ft ²)	Gels	Fluid Loss	pH	Solids (%)	Sand (%)	Oil (%)
Oil Base	1.25	82	35	24.0	15.0 / 25.0			12.20		60.00

TIME BREAKDOWN

From	To	Hours	TMD (m)	BHA #	Activity
00:00	11:30	11.50	2648.00	3	Drilling 12-1/4" section from 2552 - 2648m.
11:30	12:00	0.50	2648.00	3	Circulate/ Clean & condition hole.
12:00	23:30	11.50	2812.00	3	Drilling 12-1/4" section from 2648 - 2812m/ Encounter drill break.
23:30	00:00	0.50	2812.00	3	Pull-back off bot/ Flow check/ Static/ resume drilling ops.

COMMENTS

08:15hrs Geopilot ABI sends inconsistent data. Drill ahead manually set tool to "home".

15:00hrs Bull plug on standpipe fails. Cause determined to be 1502 nut (Bull plug) being made up to 1020 thread fixed to standpipe.

Incident to be reviewed.

sperry-sun

DRILLING SERVICES

Daily Drilling Report

Customer : Woodside Energy Ltd

Well : Thylacine South 1

Field : Thylacine

Lease : Thylacine

Rig : Maersk Guardian

Job # : AU-DD-0003930656

CURRENT STATUS Report # 19 2/04/2006

Total Depth	(m)	:	3111	Casing Depth	(m)	:	633.40	Operator Reps	:	Dwayne Rota, Shaun Corless
Drilled last 24 hrs	(m)	:	299	Casing Diameter	(in)	:	18.625	SSDS Reps	:	Trevor Ziegler (6), Mike Hackett (14)
Hole Size	(in)	:	12.250	Casing ID	(in)	:	17.755			

LAST SURVEY

Depth (m)	Inclination	Azimuth	TVD (m)	Displ (m)	Direction
3101.60	31.33	131.55	2445.99	1639.28	S34.69E

LAST FORMATION TOP

Formation Name	MD Top (m)	TVD Top (m)
Unit-4 Flaxmans Form	2993.00	2355.24

BHA SUMMARY

BHA 3: 165.30 m; Bit #3 (130.5 hrs), MWD, Stab, Flex, MWD, MWD, MWD, MWD, MWD, Sub, 4 x DC, Jar, 2 x DC, Sub, 6 x HWDP

MUD DATA

Type	Weight (sg)	FV (sec)	PV (cp)	YP (lbf/100ft ²)	Gels	Fluid Loss	pH	Solids (%)	Sand (%)	Oil (%)
Oil Base	1.25	82	35	24.0	15.0 / 25.0			12.20		60.00

TIME BREAKDOWN

From	To	Hours	TMD (m)	BHA #	Activity
00:00	12:00	12.00	2953.00	3	Drilling 12-1/4" section from 2812 - 2953m
12:00	20:30	8.50	3081.00	3	Drilling 12-1/4" section from 2953 - 3081m
20:30	22:00	1.50	3081.00	3	Circulate/ Pull back to LWD wipe from 3065 - 3081m.
22:00	00:00	2.00	3111.00	3	Drilling 12-1/4" section from 3081 - 3111m

COMMENTS

Geopilot service warnings position indicators "Switch 1" & Switch 2" active.

Woodside Energy Co Rep and SDS Drilling coordinator advised.

WEL elects to drill ahead.

sperry-sun

DRILLING SERVICES

Daily Drilling Report

Customer : Woodside Energy Ltd
 Well : Thylacine South 1
 Field : Thylacine
 Lease : Thylacine
 Rig : Maersk Guardian
 Job # : AU-DD-0003930656

CURRENT STATUS Report # 20 3/04/2006

Total Depth (m) :	3134	Casing Depth (m) :	633.40	Operator Reps :	Dwayne Rota, Shaun Corless
Drilled last 24 hrs (m) :	23	Casing Diameter (in) :	18.625	SSDS Reps :	Trevor Ziegler (7), Mike Hackett (15)
Hole Size (in) :	12.250	Casing ID (in) :	17.755		

LAST SURVEY

Depth (m)	Inclination	Azimuth	TVD (m)	Displ (m)	Direction
3129.85	29.56	130.15	2470.34	1653.15	S34.81E

LAST FORMATION TOP

Formation Name	MD Top (m)	TVD Top (m)
Unit-4 Flaxmans Form	2993.00	2355.24

BHA SUMMARY

BHA 3: 165.30 m; Bit #3 (137. hrs), MWD, Stab, Flex, MWD, MWD, MWD, MWD, MWD, Sub, 4 x DC, Jar, 2 x DC, Sub, 6 x HWDP

MUD DATA

Type	Weight (sg)	FV (sec)	PV (cp)	YP (lb/100ft ²)	Gels	Fluid Loss	pH	Solids (%)	Sand (%)	Oil (%)
Oil Base	1.25	145	38	25.0	13.0 / 25.0					62.00

TIME BREAKDOWN

From	To	Hours	TMD (m)	BHA #	Activity
00:00	06:30	6.50	3134.00	3	Drilling 12-1/4" section from 3111 - 3134m
06:30	08:00	1.50	3134.00	3	Circulate/ clean & condition/ flow check/ OK POOH
08:00	12:00	4.00	3134.00	3	POOH 5 stands wet/ Pump slug.
12:00	14:00	2.00	3134.00	3	POOH from 2190 - 1760m (Tight conditions).
14:00	15:30	1.50	3134.00	3	RIH to 1810m/ circ.
15:30	23:00	7.50	3134.00	3	Continue POOH to 18-5/8" csg shoe.
23:00	23:30	0.50	3134.00	3	Service TDS/ Flow Check/ OK POOH to surface.
23:30	00:00	0.50	3134.00	3	POOH from 633 - 580m

COMMENTS

sperry-sun

DRILLING SERVICES

Daily Drilling Report

Customer : Woodside Energy Ltd
 Well : Thylacine South 1
 Field : Thylacine
 Lease : Thylacine
 Rig : Maersk Guardian
 Job # : AU-DD-0003930656

CURRENT STATUS Report # 21 4/04/2006

Total Depth (m) :	3134	Casing Depth (m) :	633.40	Operator Reps :	Dwayne Rota, Shaun Corless
Drilled last 24 hrs (m) :	0	Casing Diameter (in) :	18.625	SSDS Reps :	Trevor Ziegler (8), Mike Hackett (16)
Hole Size (in) :	12.250	Casing ID (in) :	17.755		

LAST SURVEY

Depth (m)	Inclination	Azimuth	TVD (m)	Displ (m)	Direction
3129.85	29.56	130.15	2470.34	1653.15	S34.81E

LAST FORMATION TOP

Formation Name	MD Top (m)	TVD Top (m)
Unit-4 Flaxmans Form	2993.00	2355.24

BHA SUMMARY

BHA 3: 165.30 m; Bit #3 (137. hrs), MWD, Stab, Flex, MWD, MWD, MWD, MWD, MWD, Sub, 4 x DC, Jar, 2 x DC, Sub, 6 x HWDP
 BHA 4: 164.72 m; Bit #4 (0.5 hrs), MWD, Stab, Flex, MWD, MWD, MWD, MWD, MWD, Sub, 4 x DC, Jar, 2 x DC, Sub, 6 x HWDP

MUD DATA

Type	Weight (sg)	FV (sec)	PV (cp)	YP (lbf/100ft ²)	Gels	Fluid Loss	pH	Solids (%)	Sand (%)	Oil (%)
Oil Base	1.25	145	38	25.0	13.0 / 25.0					62.00

TIME BREAKDOWN

From	To	Hours	TMD (m)	BHA #	Activity
00:00	03:30	3.50	3134.00	3	Continue POOH from 570 - 52m (at Surface)
03:30	04:30	1.00	3134.00	3	Remove R.A. Source/ LD LWD String.
04:30	06:30	2.00	3134.00	3	Download LWD Data/ Continue LD BHA.
06:30	09:00	2.50	3134.00	4	PU new Geopilot & BHA.
09:00	09:30	0.50	3134.00	4	Crane for PU BHA on standby due to helicopter landing.
09:30	13:30	4.00	3134.00	4	Continue PU BHA/ Install Bit/ RLL & ALD.
13:30	15:00	1.50	3134.00	4	Upload LWD tools/ Install R.A. Source.
15:00	17:00	2.00	3134.00	4	Continue MU DC, Jars, HWDP.
17:00	17:30	0.50	3134.00	4	RIH/ Shallow Pulse Test MWD/ 800 - 1100gpm at 1800psi/ OK.
17:30	00:00	6.50	3134.00	4	RIH from 165 - 2648m.

COMMENTS

RIH/ Shallow Pulse Test MWD/ 800 - 1100gpm at 1800psi

sperry-sun

DRILLING SERVICES

Daily Drilling Report

Customer : Woodside Energy Ltd
 Well : Thylacine South 1
 Field : Thylacine
 Lease : Thylacine
 Rig : Maersk Guardian
 Job # : AU-DD-0003930656

CURRENT STATUS Report # 22 5/04/2006

Total Depth (m) :	3245	Casing Depth (m) :	633.40	Operator Reps :	Dwayne Rota, Shaun Corless
Drilled last 24 hrs (m) :	111	Casing Diameter (in) :	18.625	SSDS Reps :	Trevor Ziegler (9), Mike Hackett (17)
Hole Size (in) :	12.250	Casing ID (in) :	17.755		

LAST SURVEY

Depth (m)	Inclination	Azimuth	TVD (m)	Displ (m)	Direction
3216.66	28.85	150.16	2546.49	1694.40	S34.96E

LAST FORMATION TOP

Formation Name	MD Top (m)	TVD Top (m)
Unit 5a Waarre Form	3176.00	2510.79

BHA SUMMARY

BHA 4: 164.72 m; Bit #4 (8.5 hrs), MWD, Stab, Flex, MWD, MWD, MWD, MWD, MWD, Sub, 4 x DC, Jar, 2 x DC, Sub, 6 x HWDP

MUD DATA

Type	Weight (sg)	FV (sec)	PV (cp)	YP (lbf/100ft ²)	Gels	Fluid Loss	pH	Solids (%)	Sand (%)	Oil (%)
Oil Base	1.25	102	36	30.0	15.0 / 16.0			16.00		61.00

TIME BREAKDOWN

From	To	Hours	TMD (m)	BHA #	Activity
00:00	01:00	1.00	3134.00	4	Continue RIH from 2648 - 2764m.
01:00	01:30	0.50	3134.00	4	Circ/ Break-in GP seals / 985gpm 5-10rpm start-up increase to 60rpm 20mins.
01:30	11:30	10.00	3134.00	4	Continue RIH to md 3130/ clean down 3m fill to 3134m.
11:30	12:00	0.50	3138.00	4	Drilling 12-14/" section from 3134 - 3138m.
12:00	13:30	1.50	3163.00	4	Drilling 12-14/" section from 3138 - 3163m.
13:30	15:30	2.00	3163.00	4	Mudlogging unit down/ Circulate & condition hole.
15:30	21:30	6.00	3240.00	4	Drilling 12-14/" section from 3163 - 3240m./ Sustain pressure loss.
21:30	22:00	0.50	3240.00	4	Test surface equip. & investigate pressure loss/ suspect
22:00	22:30	0.50	3245.00	4	Drilling 12-14/" section from 3240 - 3245m/ continued pressure loss.
22:30	23:00	0.50	3245.00	4	POOH to investigate pressure loss/ Suspect washed DP or BHA.
23:00	00:00	1.00	3245.00	4	Circulate/ investigate pressure loss.

COMMENTS

Brendan Haren
 Tim Osborne
 Jamie Connell

sperry-sun

DRILLING SERVICES

Daily Drilling Report

Customer : Woodside Energy Ltd
 Well : Thylacine South 1
 Field : Thylacine
 Lease : Thylacine
 Rig : Maersk Guardian
 Job # : AU-DD-0003930656

CURRENT STATUS Report # 23 6/04/2006

Total Depth (m) :	3245	Casing Depth (m) :	633.40	Operator Reps :	Dwayne Rota, Shaun Corless
Drilled last 24 hrs (m) :	0	Casing Diameter (in) :	18.625	SSDS Reps :	Trevor Ziegler (10), Mike Hackett (18)
Hole Size (in) :	12.250	Casing ID (in) :	17.755		

LAST SURVEY

Depth (m)	Inclination	Azimuth	TVD (m)	Displ (m)	Direction
3216.66	28.85	150.16	2546.49	1694.40	S34.96E

LAST FORMATION TOP

Formation Name	MD Top (m)	TVD Top (m)
Unit 5a Waarre Form	3176.00	2510.79

BHA SUMMARY

BHA 4: 164.72 m; Bit #4 (8.5 hrs), MWD, Stab, Flex, MWD, MWD, MWD, MWD, MWD, Sub, 4 x DC, Jar, 2 x DC, Sub, 6 x HWDP

MUD DATA

Type	Weight (sg)	FV (sec)	PV (cp)	YP (lbf/100ft ²)	Gels	Fluid Loss	pH	Solids (%)	Sand (%)	Oil (%)
Oil Base	1.25	102	36	30.0	15.0 / 16.0			16.00		61.00

TIME BREAKDOWN

From	To	Hours	TMD (m)	BHA #	Activity
00:00	05:30	5.50	3245.00	4	Surface equip OK/ Flow Check/POOH 3245-1866m to investigate press loss.
05:30	12:00	6.50	3245.00	4	Flow Check at shoe OK/ POOH wet from 633-164m
12:00	12:30	0.50	3245.00	4	Trip Out (at Surface)/ Remove diverter bag
12:30	13:00	0.50	3245.00	4	Clean-up drill floor.
13:00	16:30	3.50	3245.00	4	LD 6x HWDP/ Rack back 2 stands DC.
16:30	17:00	0.50	3245.00	4	Remove R.A. Source/ Power down HCIM.
17:00	19:00	2.00	3245.00	4	Download LWD/ LD Directional Tools.
19:00	20:00	1.00	3245.00		Clean-up drill floor/ LD excess equipment.
20:00	23:00	3.00	3245.00		Rig-up to run MDT-GA Wireline Logs.
23:00	00:00	1.00	3245.00		RIH MDT-GA Wireline Logs.

COMMENTS

Locate washed DP on top single of stand #52.
 Change out joint of DP.
 WEL elects to continue to POOH to run wire-line logs.

sperry-sun

DRILLING SERVICES

Daily Drilling Report

Customer : Woodside Energy Ltd

Well : Thylacine South 1

Field : Thylacine

Lease : Thylacine

Rig : Maersk Guardian

Job # : AU-DD-0003930656

CURRENT STATUS Report # 24 7/04/2006

Total Depth (m) :	3245	Casing Depth (m) :	633.40	Operator Reps :	Dwayne Rota, Shaun Corless
Drilled last 24 hrs (m) :	0	Casing Diameter (in) :	18.625	SSDS Reps :	Trevor Ziegler (11), Mike Hackett (19)
Hole Size (in) :		Casing ID (in) :	17.755		

LAST SURVEY

Depth (m)	Inclination	Azimuth	TVD (m)	Displ (m)	Direction
3216.66	28.85	150.16	2546.49	1694.40	S34.96E

LAST FORMATION TOP

Formation Name	MD Top (m)	TVD Top (m)
Unit 5a Waarre Form	3176.00	2510.79

BHA SUMMARY

BHA 5: 2743.02 m; Other, Sub, Sub, DP (S), Sub, Sub, Sub

MUD DATA

Type	Weight (sg)	FV (sec)	PV (cp)	YP (lb/100ft ²)	Gels	Fluid Loss	pH	Solids (%)	Sand (%)	Oil (%)
Oil Base	1.25	102	36	30.0	15.0 / 16.0			16.00		61.00

TIME BREAKDOWN

From	To	Hours	TMD (m)	BHA #	Activity
00:00	01:00	1.00	3245.00		Continue RIH Schlumberger MDT-GA Wireline Logs to 3100m.
01:00	03:30	2.50	3245.00		1000 lb-overpull detected. No go/ POOH Wireline Logs.
03:30	04:30	1.00	3245.00		Wireline Logs at surface/ Disconnect cable from tool.
04:30	05:00	0.50	3245.00		Rig-down SLB MDT tools.
05:00	08:30	3.50	3245.00		Rig-up SLB TLC Wireline Logging tools.
08:30	09:30	1.00	3245.00	5	PU & RIH SLB Wireline Logging tools.
09:30	12:30	3.00	3245.00	5	MU & RIH SLB MDT- GA tools & test.
12:30	13:00	0.50	3245.00	5	Clean-up drill floor.
13:00	18:00	5.00	3245.00	5	RIH Wireline Logs/ Drift DP with pipe rabbit from derrick.
18:00	19:00	1.00	3245.00	5	No Activity/ Job time-out/ Investigate "dropped tool from derrick".
19:00	20:00	1.00	3245.00	5	Continue RIH Wireline Logs from 83 - 1065m.
20:00	23:00	3.00	3245.00	5	Prepare to extend handrails.
23:00	00:00	1.00	3245.00	5	Standby / work string due to safety meeting.

COMMENTS

Schlumberger wireline logging run "No Go" past md 3100.
POOH to refit & rig-up drill-pipe conveyed logging tools.

Maersk drill crew member dislocates shoulder - investigate & safety review follow-up.

DP Rabbit dropped from derrick. Job stopped, safety time-out to investigate & review near miss.

sperry-sun

DRILLING SERVICES

Daily Drilling Report

Customer : Woodside Energy Ltd

Well : Thylacine South 1

Field : Thylacine

Lease : Thylacine

Rig : Maersk Guardian

Job # : AU-DD-0003930656

CURRENT STATUS Report # 25 8/04/2006

Total Depth (m) :	3245	Casing Depth (m) :	633.40	Operator Reps :	Dwayne Rota, Phil Hodson
Drilled last 24 hrs (m) :	0	Casing Diameter (in) :	18.625	SSDS Reps :	Trevor Ziegler (12), Mike Hackett (20)
Hole Size (in) :		Casing ID (in) :	17.755		

LAST SURVEY

Depth (m)	Inclination	Azimuth	TVD (m)	Displ (m)	Direction
3216.66	28.85	150.16	2546.49	1694.40	S34.96E

LAST FORMATION TOP

Formation Name	MD Top (m)	TVD Top (m)
Unit 5a Waarre Form	3176.00	2510.79

BHA SUMMARY

BHA 5: 2743.02 m; Other, Sub, Sub, DP (S), Sub, Sub, Sub

MUD DATA

Type	Weight (sg)	FV (sec)	PV (cp)	YP (lbf/100ft ²)	Gels	Fluid Loss	pH	Solids (%)	Sand (%)	Oil (%)
Oil Base	1.25	102	36	30.0	15.0 / 16.0			16.00		61.00

TIME BREAKDOWN

From	To	Hours	TMD (m)	BHA #	Activity
00:00	00:30	0.50	3245.00	5	PJSM/ Clean drill floor.
00:30	07:00	6.50	3245.00	5	Continue RIH from 1181 - 2739m.
07:00	08:30	1.50	3245.00	5	Circulate/ SLB reciprocate drill-string.
08:30	09:30	1.00	3245.00	5	Wireline Logs/ MU crossovers to drill string.
09:30	10:00	0.50	3245.00	5	Circulate/ Pump down cable & wet connect/ check tool.
10:00	11:00	1.00	3245.00	5	Wireline Logs/ Tighten clamps/ Pull Test OK.
11:00	11:30	0.50	3245.00	5	Continue RIH DP & cable 2739 - 2829./ Pull back to 2808m
11:30	12:00	0.50	3245.00	5	Wireline Logs/ Iniate logging run.
12:00	00:00	12.00	3245.00	5	Wireline Logs/ Continue from 2808 - 3105m.

COMMENTS

sperry-sun

DRILLING SERVICES

Daily Drilling Report

Customer : Woodside Energy Ltd

Well : Thylacine South 1

Field : Thylacine

Lease : Thylacine

Rig : Maersk Guardian

Job # : AU-DD-0003930656

CURRENT STATUS Report # 26 9/04/2006

Total Depth	(m)	:	3245	Casing Depth	(m)	:	633.40	Operator Reps	:	Dwayne Rota, Phil Hodson
Drilled last 24 hrs	(m)	:	0	Casing Diameter	(in)	:	18.625	SSDS Reps	:	Trevor Ziegler (13), Mike Hackett (21)
Hole Size	(in)	:	4.750	Casing ID	(in)	:	17.755			

LAST SURVEY

Depth (m)	Inclination	Azimuth	TVD (m)	Displ (m)	Direction
3216.66	28.85	150.16	2546.49	1694.40	S34.96E

LAST FORMATION TOP

Formation Name	MD Top (m)	TVD Top (m)
Unit 5a Waarre Form	3176.00	2510.79

BHA SUMMARY

BHA 5: 2743.02 m; Other, Sub, Sub, DP (S), Sub, Sub, Sub

BHA 6: 281.32 m; Other, Sub, 29x DP (S), Sub, Sub

MUD DATA

Type	Weight (sg)	FV (sec)	PV (cp)	YP (lbf/100ft ²)	Gels	Fluid Loss	pH	Solids (%)	Sand (%)	Oil (%)
Oil Base	1.25	102	36	30.0	15.0 / 16.0			16.00		61.00

TIME BREAKDOWN

From	To	Hours	TMD (m)	BHA #	Activity
00:00	01:30	1.50	3245.00	5	Continue SLB TLC DP conveyed Logs from 3105 - 3208m.
01:30	04:30	3.00	3245.00	5	POOH while logging from 3208 - 2974m.
04:30	08:00	3.50	3245.00	5	Pump slug/ Continue Logging while POOH 2974-2739m
08:00	09:00	1.00	3245.00	5	SLB Logging/ Remove cable clamp & pack-off.
09:00	10:00	1.00	3245.00	5	SLB Logging/ Break-out XO's/ Rig-down sheaves.
10:00	12:00	2.00	3245.00	5	Instal PS21/ Continue POOH from 2739-2045m.
12:00	19:00	7.00	3245.00	5	Continue POOH from 2045-632m/ Flow check OK.
19:00	21:00	2.00	3245.00	5	Trip Out (at Surface)/ Lay down SLB Tools & equipment.
21:00	22:00	1.00	3245.00	5	LD SLB/ Clean Drill Floor
22:00	23:30	1.50	3245.00	6	PU handling equipment for 4" DP.
23:30	00:00	0.50	3245.00	6	PJSM/ PU 4" DP & mule shoe.

COMMENTS

sperry-sun

DRILLING SERVICES

Daily Drilling Report

Customer : Woodside Energy Ltd

Well : Thylacine South 1

Field : Thylacine

Lease : Thylacine

Rig : Maersk Guardian

Job # : AU-DD-0003930656

CURRENT STATUS Report # 27 10/04/2006

Total Depth (m) :	3245	Casing Depth (m) :	633.40	Operator Reps :	Dwayne Rota, Phil Hodson
Drilled last 24 hrs (m) :	0	Casing Diameter (in) :	18.625	SSDS Reps :	Trevor Ziegler (14), Mike Hackett (22)
Hole Size (in) :	4.750	Casing ID (in) :	17.755		

LAST SURVEY

Depth (m)	Inclination	Azimuth	TVD (m)	Displ (m)	Direction
3216.66	28.85	150.16	2546.49	1694.40	S34.96E

LAST FORMATION TOP

Formation Name	MD Top (m)	TVD Top (m)
Unit 5a Waarre Form	3176.00	2510.79

BHA SUMMARY

BHA 6: 281.32 m; Other, Sub, 29x DP (S), Sub, Sub

MUD DATA

Type	Weight (sg)	FV (sec)	PV (cp)	YP (lbf/100ft ²)	Gels	Fluid Loss	pH	Solids (%)	Sand (%)	Oil (%)
Oil Base	1.25	102	36	30.0	15.0 / 16.0			16.00		61.00

TIME BREAKDOWN

From	To	Hours	TMD (m)	BHA #	Activity
00:00	03:30	3.50	3245.00	6	PU RIH cement stinger on 4" Hydril WT 38 DP to 280m/ Change handling gear.
03:30	04:00	0.50	3245.00	6	Change-out insert PS21/ Break circulation.
04:00	11:30	7.50	3245.00	6	RIH/ Circulate every 500m.
11:30	12:00	0.50	3245.00	6	Circulate/ prior to pumping cement plug.
12:00	15:00	3.00	3245.00	6	Circulate 2x Bottoms-up/ clean hole.
15:00	15:30	0.50	3245.00	6	MU Side entry sub (SES)/ connect HP cement line
15:30	17:30	2.00	3245.00	6	Test HP line OK/ Perform cement Job#1.
17:30	19:00	1.50	3245.00	6	Disconnect HP line/ Pull back 3245 - 2985m.
19:00	20:00	1.00	3245.00	6	MU SES & connect HP cement line/ Test OK.
20:00	21:30	1.50	3245.00	6	Pump 40 bbl space/ Perform Cement Job #2
21:30	23:30	2.00	3245.00	6	Disconnect HP line/ Pull back 2985 - 2650m.
23:30	00:00	0.50	3245.00	6	Circulate bottoms-up.

COMMENTS

sperry-sun

DRILLING SERVICES

Daily Drilling Report

Customer : Woodside Energy Ltd

Well : Thylacine South 1

Field : Thylacine

Lease : Thylacine

Rig : Maersk Guardian

Job # : AU-DD-0003930656

CURRENT STATUS Report # 28 11/04/2006

Total Depth (m) :	3245	Casing Depth (m) :	633.40	Operator Reps :	Dwayne Rota, Phil Hodson
Drilled last 24 hrs (m) :	0	Casing Diameter (in) :	18.625	SSDS Reps :	Trevor Ziegler (15), Mike Hackett (23)
Hole Size (in) :	4.750	Casing ID (in) :	17.755		

LAST SURVEY

Depth (m)	Inclination	Azimuth	TVD (m)	Displ (m)	Direction
3216.66	28.85	150.16	2546.49	1694.40	S34.96E

LAST FORMATION TOP

Formation Name	MD Top (m)	TVD Top (m)
Unit 5a Waarre Form	3176.00	2510.79

BHA SUMMARY

BHA 6: 281.32 m; Other, Sub, 29x DP (S), Sub, Sub

MUD DATA

Type	Weight (sg)	FV (sec)	PV (cp)	YP (lb/100ft ²)	Gels	Fluid Loss	pH	Solids (%)	Sand (%)	Oil (%)
Oil Base	1.25	102	36	30.0	15.0 / 16.0			16.00		61.00

TIME BREAKDOWN

From	To	Hours	TMD (m)	BHA #	Activity
00:00	00:30	0.50	3245.00	6	Continue circulate bottoms-up.
00:30	02:00	1.50	3245.00	6	Continue PU 2 stands 5-1/2"HWD.
02:00	03:00	1.00	3245.00	6	Pull back to 2650m.
03:00	03:30	0.50	3245.00	6	Circulate
03:30	04:00	0.50	3245.00	6	RIH tag top of cement plug 2120m.
04:00	06:30	2.50	3245.00	6	Pull back to 2120m.
06:30	08:00	1.50	3245.00	6	Circulate
08:00	10:00	2.00	3245.00	6	Circulate/ Displace well to sea water.
10:00	12:00	2.00	3245.00	6	Pumps on trip tank.
12:00	16:30	4.50	3245.00	6	POOH 2156 -930m.
16:30	17:00	0.50	3245.00	6	Circulate/ displace string to sea water
17:00	17:30	0.50	3245.00	6	POOH to 830m.
17:30	18:00	0.50	3245.00	6	MU SES/ pressure test surface equipment.
18:00	19:00	1.00	3245.00	6	Perform cement job #3.
19:00	20:00	1.00	3245.00	6	Pull back to 550m.
20:00	21:00	1.00	3245.00	6	Circulate bottoms-up.
21:00	23:00	2.00	3245.00	6	Cut Drill Line/ wait on cement
23:00	00:00	1.00	3245.00	6	RIH tag top of cement 604m.

COMMENTS

sperry-sun

DRILLING SERVICES

Daily Drilling Report

Customer : Woodside Energy Ltd

Well : Thylacine South 1

Field : Thylacine

Lease : Thylacine

Rig : Maersk Guardian

Job # : AU-DD-0003930656

CURRENT STATUS Report # 29 12/04/2006

Total Depth (m) :	3245	Casing Depth (m) :	633.40	Operator Reps :	Stewart Job, Phil Hodson
Drilled last 24 hrs (m) :	0	Casing Diameter (in) :	18.625	SSDS Reps :	Trevor Ziegler (16), Mike Hackett (24)
Hole Size (in) :	4.750	Casing ID (in) :	17.755		

LAST SURVEY

Depth (m)	Inclination	Azimuth	TVD (m)	Displ (m)	Direction
3216.66	28.85	150.16	2546.49	1694.40	S34.96E

LAST FORMATION TOP

Formation Name	MD Top (m)	TVD Top (m)
Unit 5a Waarre Form	3176.00	2510.79

BHA SUMMARY

BHA 6: 281.32 m; Other, Sub, 29x DP (S), Sub, Sub

MUD DATA

Type	Weight (sg)	FV (sec)	PV (cp)	YP (lb/100ft ²)	Gels	Fluid Loss	pH	Solids (%)	Sand (%)	Oil (%)
Oil Base	1.25	102	36	30.0	15.0 / 16.0			16.00		61.00

TIME BREAKDOWN

From	To	Hours	TMD (m)	BHA #	Activity
00:00	01:00	1.00	3245.00	6	Circulate/ Pump 567bbl inhibitor seawater/ Flusk Kill & choke lines
01:00	02:00	1.00	3245.00	6	POOH 602 - 281m.
02:00	06:00	4.00	3245.00	6	Break-out SES/ remove PS21/ Pull diverter.
06:00	07:00	1.00	3245.00	6	Install master bushing
07:00	08:00	1.00	3245.00	6	LD handling gear.
08:00	09:00	1.00	3245.00	6	Trip Out (at Surface) lay down washed DP/ clean & clear rig floor.
09:00	11:00	2.00	3245.00		Nipple Down BOP system.
11:00	13:30	2.50	3245.00		Operations stand-down for MSK Safety Meeting.
13:30	22:00	8.50	3245.00		Nipple down BOP system.
22:00	23:30	1.50	3245.00		Tear Down/ Prepare to Skid rig to THA01.
23:30	00:00	0.50	3245.00		Tear Down/ Remove handrails top BOP.

COMMENTS



Job # : AU-DD-0003930656

Philippe Granjean DD relieves Mike Hackett DD